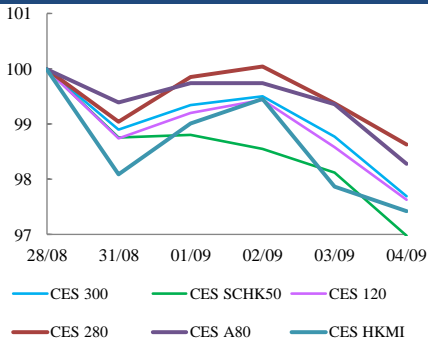




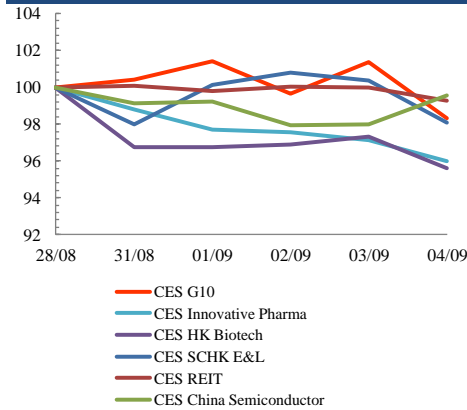
## Index Performance Review (28 August 2020 – 4 September 2020)

- The purchasing managers' index (PMI) for China's manufacturing sector decreased to 51 in August from 51.1 in July. CES A80 Index decreased 1.7%.
- Hong Kong's retail sales dropped in July amid the third wave of COVID-19 epidemic, recording a year-on-year decrease of 23.1 percent, data of the Hong Kong Special Administrative Region (HKSAR) government showed Tuesday. CES SCHK E&L Index was down 1.9%.

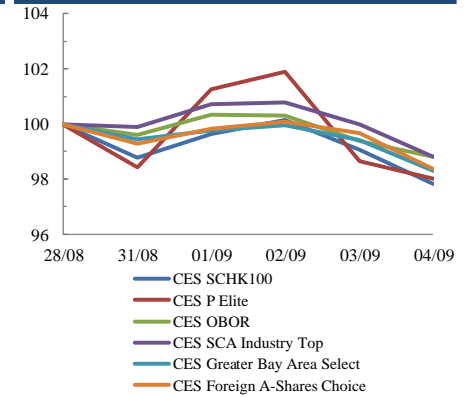
### Size Indices Performance 28/8/2020 -4/9/2020



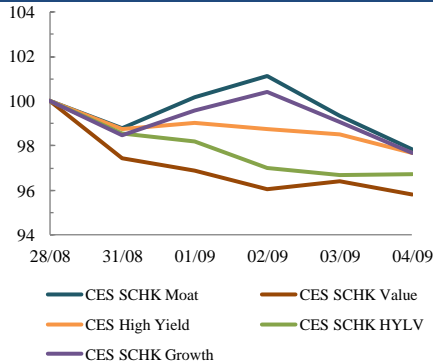
### Sector Indices Performance 28/8/2020 -4/9/2020



### Thematic Indices Performance 28/8/2020 -4/9/2020



### Strategy Indices Performance 28/8/2020 -4/9/2020



	Return (%)	Index	Since 28/08/2020	YTD (2020)	Since SZ-HK Stock (5/12/2016)	Since SH-HK Stock (17/11/2014)
<b>Size Indices Performance</b>						
CES 300		5,173.98	-2.3%	8.2%	38.6%	60.0%
CES 120		7,749.76	-2.4%	8.2%	49.2%	88.0%
CES 280		7,803.31	-1.4%	22.8%	28.6%	52.0%
CES A80		8,965.88	-1.7%	8.1%	45.0%	108.4%
CES HKMI		8,333.50	-2.6%	4.5%	48.9%	46.8%
CES SCHK50		2,764.50	-3.0%	-11.0%	11.3%	7.2%
<b>Sector Indices Performance</b>						
CES G10		4,893.30	-1.7%	-13.3%	14.0%	-26.6%
CES HK Biotech		9,555.44	-4.4%	49.3%	279.1%	n.a.
CES Innovative Pharma		15,587.11	-4.0%	58.8%	178.7%	234.5%
CES SCHK E&L		4,355.43	-1.9%	12.5%	20.1%	-2.4%
CES REIT		2,469.39	-0.7%	-29.5%	-19.2%	-12.7%
CES China Semiconductor Chips		8,945.73	-0.4%	53.4%	94.4%	150.9%
<b>Thematic Indices Performance</b>						
CES SCHK 100		5,868.64	-2.2%	3.8%	34.3%	27.3%
CES OBOR		1,926.30	-1.2%	10.8%	15.6%	n.a.
CES P Elite		9,024.20	-2.0%	42.1%	138.5%	156.1%
CES SCA Industry Top		5,377.93	-1.2%	18.0%	79.5%	156.5%
CES Greater Bay Area Select		2,682.45	-1.7%	12.0%	50.5%	n.a.
CES Foreign A-Shares Choice		3,287.53	-1.6%	12.3%	n.a.	n.a.
<b>Strategy Indices Performance</b>						
CES High Yield		3,400.25	-2.3%	-17.2%	25.5%	16.6%
CES SCHK HYL V		2,433.70	-3.3%	-17.6%	-12.3%	-11.4%
CES SCHK Moat		4,355.40	-2.2%	10.7%	69.7%	61.7%
CES SCHK Value		4,363.95	-4.2%	-12.7%	42.9%	47.2%
CES SCHK Growth		6,355.96	-2.3%	5.5%	93.4%	84.6%