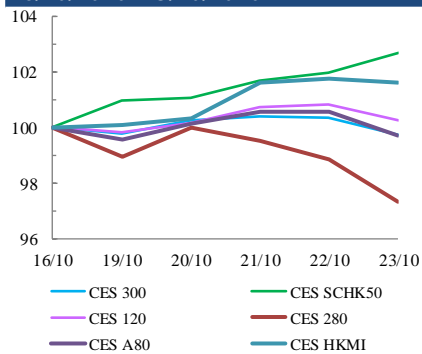




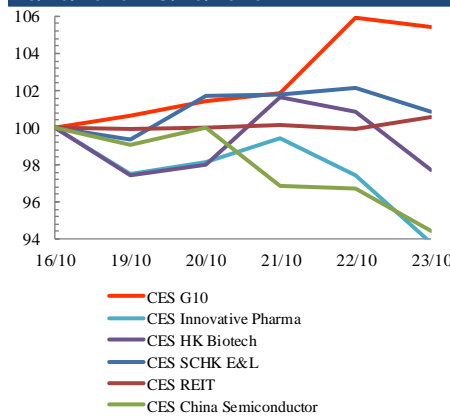
## Index Performance Review (16 October 2020 – 23 October 2020)

- Hong Kong stocks climbed after China's stock regulators granted approved Ant Group IPO for listing review in Hong Kong. CES SCHK50 Index increased 2.7%.
- China's third-quarter GDP grew 4.9% as compared to a year ago, according to data released Monday by the country's National Bureau of Statistics. CES HKMI Index was up 1.6%.

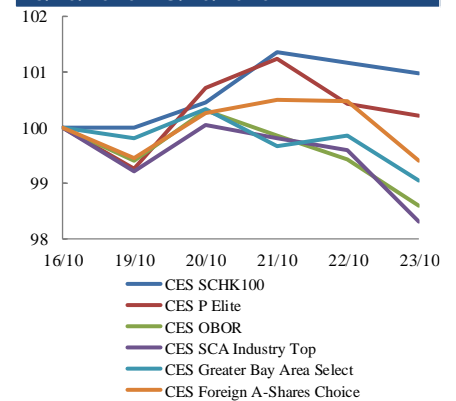
### Size Indices Performance 16/10/2020 -23/10/2020



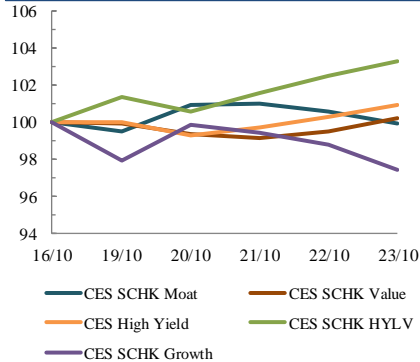
### Sector Indices Performance 16/10/2020 -23/10/2020



### Thematic Indices Performance 16/10/2020 -23/10/2020



### Strategy Indices Performance 16/10/2020 -23/10/2020



	Return (%)	Index	Since 16/10/2020	YTD (2020)	Since SZ-HK Stock (5/12/2016)	Since SH-HK Stock (17/11/2014)
<b>Size Indices Performance</b>						
CES 300		5,147.75	-0.3%	7.6%	37.9%	59.2%
CES 120		7,849.67	0.3%	9.6%	51.1%	90.4%
CES 280		7,482.99	-2.6%	17.8%	23.3%	45.8%
CES A80		9,096.85	-0.3%	9.7%	47.1%	111.4%
CES HKMI		8,554.95	1.6%	7.2%	52.8%	50.7%
CES SCHK50		2,808.66	2.7%	-9.6%	13.1%	9.0%
<b>Sector Indices Performance</b>						
CES G10		4,286.13	5.4%	-24.0%	-0.1%	-35.7%
CES HK Biotech		9,817.75	-2.3%	53.4%	289.5%	n.a.
CES Innovative Pharma		14,379.10	-6.2%	46.5%	157.1%	208.6%
CES SCHK E&L		4,321.75	0.9%	11.7%	19.2%	-3.2%
CES REIT		2,418.99	0.5%	-31.0%	-20.9%	-14.5%
CES China Semiconductor Chips		8,159.12	-5.5%	39.9%	77.3%	128.8%
<b>Thematic Indices Performance</b>						
CES SCHK 100		5,811.12	1.0%	2.8%	33.0%	26.0%
CES OBOR		1,902.41	-1.4%	9.4%	14.1%	n.a.
CES P Elite		9,325.60	0.2%	46.8%	146.5%	164.7%
CES SCA Industry Top		5,351.26	-1.7%	17.4%	78.6%	155.3%
CES Greater Bay Area Select		2,656.68	-1.0%	10.9%	49.1%	n.a.
CES Foreign A-Shares Choice		3,361.31	-0.6%	14.8%	n.a.	n.a.
<b>Strategy Indices Performance</b>						
CES High Yield		3,293.47	0.9%	-19.8%	21.6%	13.0%
CES SCHK HYL		2,495.59	3.3%	-15.5%	-10.1%	-9.1%
CES SCHK Moat		4,368.57	-0.1%	11.0%	70.2%	62.2%
CES SCHK Value		4,139.60	0.2%	-17.2%	35.6%	39.6%
CES SCHK Growth		6,545.44	-2.5%	8.6%	99.2%	90.1%