



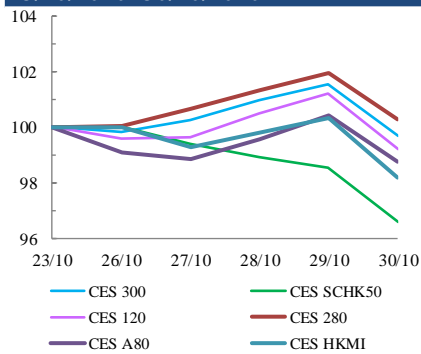
中華交易服務

CHINA
EXCHANGES
SERVICES

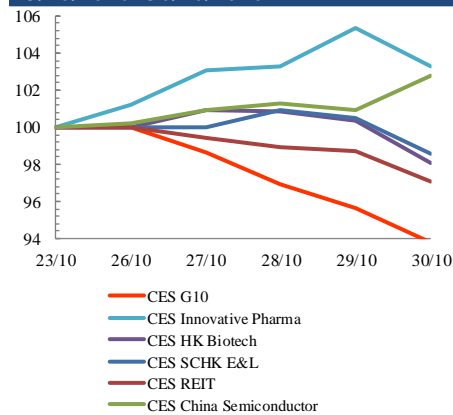
Index Performance Review (23 October 2020 – 30 October 2020)

- The Ministry of Commerce's newly published data showed RMB 718.81 bln (USD 103.26 bln) net foreign investments into China from Jan to Sep, an increase of 5.2% YoY. CES SCA Industry Top Index increased 0.6%.
- Hong Kong stocks fell to a one-week low, joining a sharp global equity sell-off prompted by concerns over rising coronavirus infections and the US election outcome. CES SCHK 100 Index was down 0.3%.

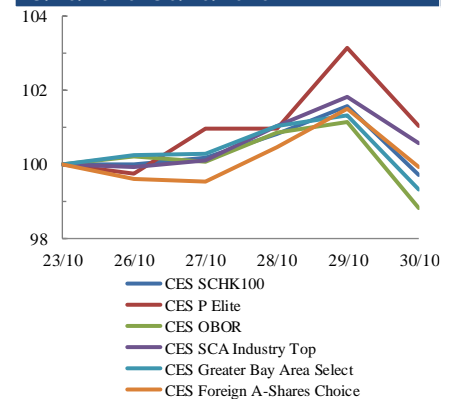
Size Indices Performance 23/10/2020 -30/10/2020



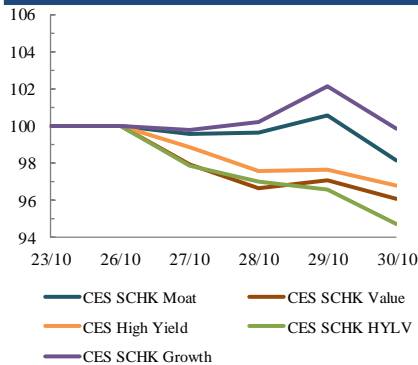
Sector Indices Performance 23/10/2020 -30/10/2020



Thematic Indices Performance 23/10/2020 -30/10/2020



Strategy Indices Performance 23/10/2020 -30/10/2020



	Return (%)	Index	Since 23/10/2020	YTD (2020)	Since SZ-HK Stock (5/12/2016)	Since SH-HK Stock (17/11/2014)
Size Indices Performance						
CES 300		5,131.06	-0.3%	7.3%	37.4%	58.7%
CES 120		7,788.49	-0.8%	8.7%	49.9%	88.9%
CES 280		7,505.31	0.3%	18.1%	23.7%	46.2%
CES A80		8,985.31	-1.2%	8.3%	45.3%	108.8%
CES HKMI		8,398.54	-1.8%	5.3%	50.0%	47.9%
CES SCHK50		2,712.91	-3.4%	-12.7%	9.2%	5.2%
Sector Indices Performance						
CES G10		4,018.56	-6.2%	-28.8%	-6.4%	-39.7%
CES HK Biotech		9,626.62	-1.9%	50.4%	281.9%	n.a.
CES Innovative Pharma		14,846.52	3.3%	51.2%	165.5%	218.6%
CES SCHK E&L		4,259.54	-1.4%	10.0%	17.5%	-4.5%
CES REIT		2,347.92	-2.9%	-33.0%	-23.2%	-17.0%
CES China Semiconductor Chips		8,384.25	2.8%	43.8%	82.2%	135.2%
Thematic Indices Performance						
CES SCHK 100		5,793.49	-0.3%	2.5%	32.6%	25.6%
CES OBOR		1,879.60	-1.2%	8.1%	12.8%	n.a.
CES P Elite		9,422.24	1.0%	48.4%	149.1%	167.4%
CES SCA Industry Top		5,381.73	0.6%	18.1%	79.6%	156.7%
CES Greater Bay Area Select		2,638.02	-0.7%	10.2%	48.0%	n.a.
CES Foreign A-Shares Choice		3,359.10	-0.1%	14.7%	n.a.	n.a.
Strategy Indices Performance						
CES High Yield		3,188.32	-3.2%	-22.3%	17.7%	9.4%
CES SCHK HYL V		2,363.46	-5.3%	-20.0%	-14.8%	-13.9%
CES SCHK Moat		4,285.82	-1.9%	8.9%	67.0%	59.2%
CES SCHK Value		3,975.74	-4.0%	-20.5%	30.2%	34.1%
CES SCHK Growth		6,537.12	-0.1%	8.5%	98.9%	89.9%