



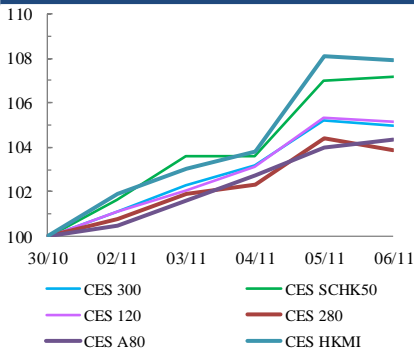
中華交易服務

CHINA
EXCHANGES
SERVICES

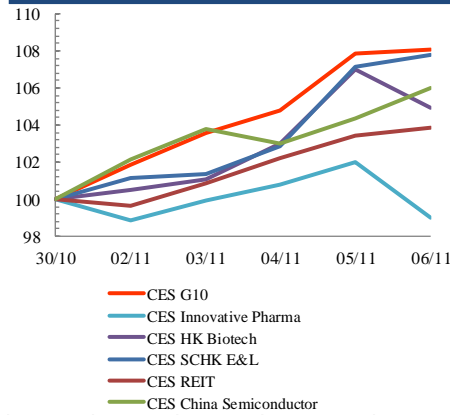
Index Performance Review (30 October 2020 – 6 November 2020)

- Stock markets in Hong Kong rallied strongly despite the outcome of the United States presidential election hanging in the balance. CES SCHK 100 Index rose 8.1%.
- The Caixin/Markit manufacturing purchasing managers' index (PMI) rose to 53.6 in October from 53.0 in September. CES A80 Index soared by 4.3%.

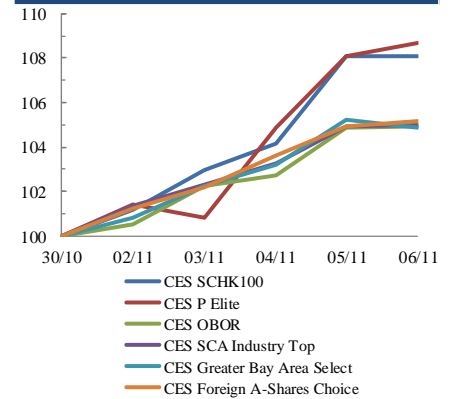
Size Indices Performance 30/10/2020 -6/11/2020



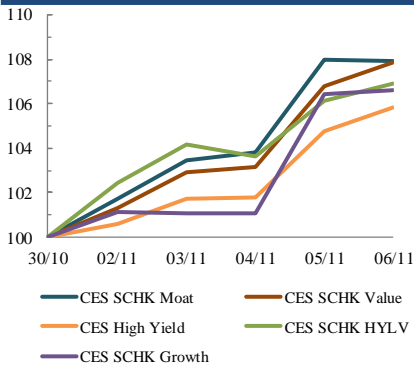
Sector Indices Performance 30/10/2020 -6/11/2020



Thematic Indices Performance 30/10/2020 -6/11/2020



Strategy Indices Performance 30/10/2020 -6/11/2020



	Return (%)	Index	Since 30/10/2020	YTD (2020)	Since SZ-HK Stock (5/12/2016)	Since SH-HK Stock (17/11/2014)
Size Indices Performance						
CES 300		5,385.55	5.0%	12.6%	44.2%	66.5%
CES 120		8,188.51	5.1%	14.3%	57.6%	98.6%
CES 280		7,795.55	3.9%	22.7%	28.5%	51.9%
CES A80		9,372.99	4.3%	13.0%	51.5%	117.8%
CES HKMI		9,060.59	7.9%	13.6%	61.9%	59.6%
CES SCHK50		2,906.86	7.1%	-6.4%	17.0%	12.8%
Sector Indices Performance						
CES G10		4,343.79	8.1%	-23.0%	1.2%	-34.9%
CES HK Biotech		10,102.87	4.9%	57.8%	300.8%	n.a.
CES Innovative Pharma		14,697.17	-1.0%	49.7%	162.8%	215.4%
CES SCHK E&L		4,590.24	7.8%	18.6%	26.6%	2.9%
CES REIT		2,438.04	3.8%	-30.4%	-20.3%	-13.8%
CES China Semiconductor Chips		8,884.14	6.0%	52.3%	93.1%	149.2%
Thematic Indices Performance						
CES SCHK 100		6,262.75	8.1%	10.8%	43.3%	35.8%
CES OBOR		1,972.20	4.9%	13.4%	18.3%	n.a.
CES P Elite		10,237.94	8.7%	61.2%	170.6%	190.6%
CES SCA Industry Top		5,651.66	5.0%	24.0%	88.7%	169.6%
CES Greater Bay Area Select		2,767.01	4.9%	15.5%	55.3%	n.a.
CES Foreign A-Shares Choice		3,532.96	5.2%	20.7%	n.a.	n.a.
Strategy Indices Performance						
CES High Yield		3,375.00	5.9%	-17.8%	24.6%	15.8%
CES SCHK HYL V		2,526.17	6.9%	-14.5%	-9.0%	-8.0%
CES SCHK Moat		4,624.54	7.9%	17.6%	80.2%	71.7%
CES SCHK Value		4,287.54	7.8%	-14.3%	40.4%	44.6%
CES SCHK Growth		6,970.48	6.6%	15.7%	112.1%	102.4%