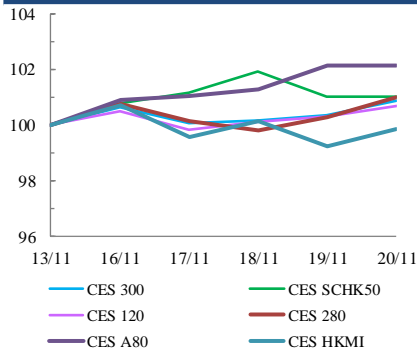




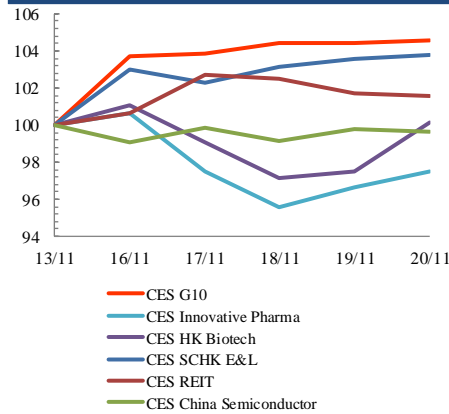
## Index Performance Review (13 November 2020 – 20 November 2020)

- China stock market gained following the formation of China-backed Regional Comprehensive Economic Partnership (RCEP) made up by 15 Asia-Pacific economies which accounted for 30% of the global economy. CES A80 Index rose 2.1%.
- The Mandatory Provident Fund (MPF) will be able to offer a greater range of investment options after a government rule change that allows fund managers to plough more of the HK\$1 trillion (US\$129 billion) pot into the shares of companies listed in mainland China. CES SCA Industry Top Index advanced 1.3%.

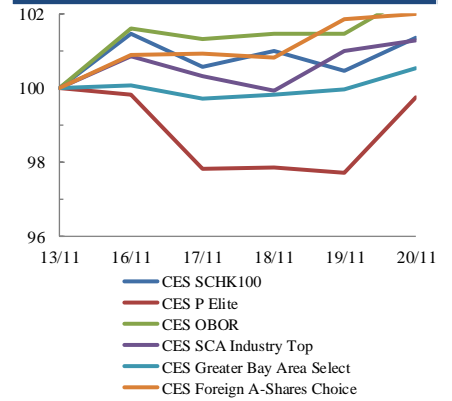
### Size Indices Performance 13/11/2020 -20/11/2020



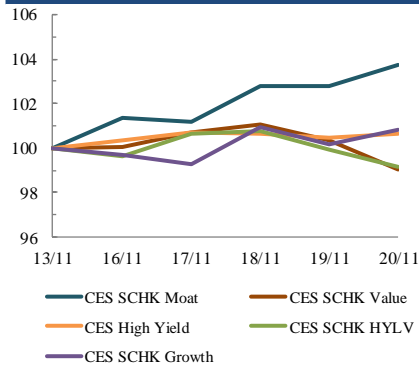
### Sector Indices Performance 13/11/2020 -20/11/2020



### Thematic Indices Performance 13/11/2020 -20/11/2020



### Strategy Indices Performance 13/11/2020 -20/11/2020



	Return (%)	Index	Since 13/11/2020	YTD (2020)	Since SZ-HK Stock (5/12/2016)	Since SH-HK Stock (17/11/2014)
<b>Size Indices Performance</b>						
CES 300		5,418.37	0.9%	13.3%	45.1%	67.6%
CES 120		8,169.46	0.7%	14.0%	57.3%	98.1%
CES 280		7,854.11	1.0%	23.6%	29.4%	53.0%
CES A80		9,498.23	2.1%	14.5%	53.6%	120.8%
CES HKMI		8,984.63	-0.1%	12.6%	60.5%	58.3%
CES SCHK50		3,000.21	1.0%	-3.4%	20.8%	16.4%
<b>Sector Indices Performance</b>						
CES G10		4,925.99	4.5%	-12.7%	14.8%	-26.1%
CES HK Biotech		10,062.37	0.1%	57.2%	299.2%	n.a.
CES Innovative Pharma		14,228.80	-2.5%	44.9%	154.5%	205.4%
CES SCHK E&L		4,786.32	3.8%	23.7%	32.0%	7.3%
CES REIT		2,603.76	1.6%	-25.7%	-14.8%	-8.0%
CES China Semiconductor Chips		8,847.72	-0.4%	51.7%	92.3%	148.2%
<b>Thematic Indices Performance</b>						
CES SCHK 100		6,379.62	1.4%	12.9%	46.0%	38.3%
CES OBOR		2,026.57	2.6%	16.5%	21.6%	n.a.
CES P Elite		10,090.32	-0.3%	58.9%	166.7%	186.4%
CES SCA Industry Top		5,641.37	1.3%	23.8%	88.3%	169.1%
CES Greater Bay Area Select		2,773.11	0.5%	15.8%	55.6%	n.a.
CES Foreign A-Shares Choice		3,574.53	2.0%	22.1%	n.a.	n.a.
<b>Strategy Indices Performance</b>						
CES High Yield		3,465.34	0.7%	-15.6%	27.9%	18.9%
CES SCHK HYL V		2,539.11	-0.8%	-14.0%	-8.5%	-7.5%
CES SCHK Moat		4,801.65	3.8%	22.1%	87.1%	78.3%
CES SCHK Value		4,302.96	-0.9%	-13.9%	40.9%	45.1%
CES SCHK Growth		6,986.51	0.8%	15.9%	112.6%	102.9%