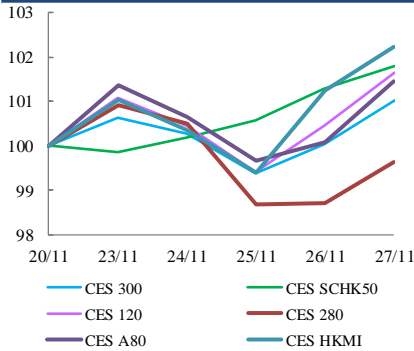




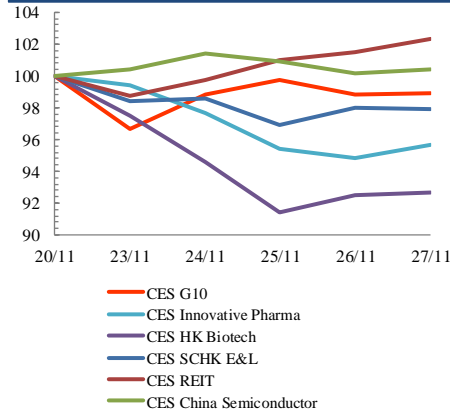
Index Performance Review (20 November 2020 – 27 November 2020)

- Global funds will be allowed to access shares on Shanghai's Star Market via an expanded Stock Connect scheme from Hong Kong. CES A80 Index rose 1.4%.
- China's factory activity likely expanded at a slightly faster pace in November, a Reuters poll showed on Friday, as the world's second-largest economy steadily recovers from the coronavirus crisis. CES Foreign A-Shares Choice Index advanced 0.9%.

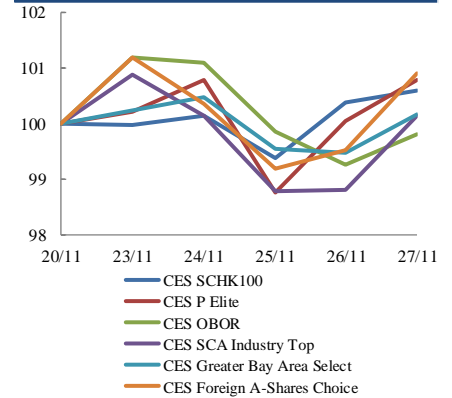
Size Indices Performance
20/11/2020 -27/11/2020



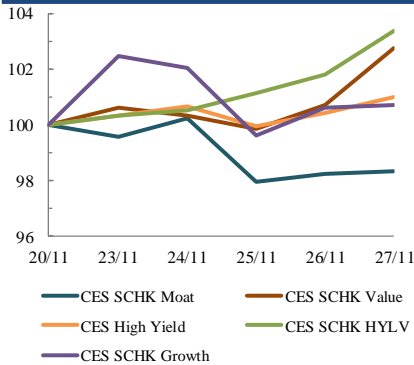
Sector Indices Performance
20/11/2020 -27/11/2020



Thematic Indices Performance
20/11/2020 -27/11/2020



Strategy Indices Performance
20/11/2020 -27/11/2020



	Return (%)	Index	Since 20/11/2020	YTD (2020)	Since SZ-HK Stock (5/12/2016)	Since SH-HK Stock (17/11/2014)
Size Indices Performance						
CES 300		5,473.05	1.0%	14.4%	46.6%	69.2%
CES 120		8,303.88	1.6%	15.9%	59.9%	101.4%
CES 280		7,826.17	-0.4%	23.2%	29.0%	52.5%
CES A80		9,635.84	1.4%	16.2%	55.8%	123.9%
CES HKMI		9,184.24	2.2%	15.1%	64.1%	61.8%
CES SCHK50		3,054.23	1.8%	-1.7%	23.0%	18.5%
Sector Indices Performance						
CES G10		4,871.98	-1.1%	-13.7%	13.5%	-26.9%
CES HK Biotech		9,326.68	-7.3%	45.7%	270.0%	n.a.
CES Innovative Pharma		13,612.62	-4.3%	38.7%	143.4%	192.2%
CES SCHK E&L		4,688.03	-2.1%	21.1%	29.3%	5.1%
CES REIT		2,663.86	2.3%	-24.0%	-12.9%	-5.8%
CES China Semiconductor Chips		8,882.60	0.4%	52.3%	93.1%	149.1%
Thematic Indices Performance						
CES SCHK 100		6,416.78	0.6%	13.5%	46.8%	39.2%
CES OBOR		2,022.42	-0.2%	16.3%	21.3%	n.a.
CES P Elite		10,168.97	0.8%	60.1%	168.8%	188.6%
CES SCA Industry Top		5,649.61	0.1%	23.9%	88.6%	169.5%
CES Greater Bay Area Select		2,777.64	0.2%	16.0%	55.9%	n.a.
CES Foreign A-Shares Choice		3,606.44	0.9%	23.2%	n.a.	n.a.
Strategy Indices Performance						
CES High Yield		3,499.21	1.0%	-14.8%	29.2%	20.0%
CES SCHK HYL V		2,624.69	3.4%	-11.1%	-5.4%	-4.4%
CES SCHK Moat		4,722.30	-1.7%	20.0%	84.0%	75.4%
CES SCHK Value		4,421.37	2.8%	-11.6%	44.8%	49.1%
CES SCHK Growth		7,035.28	0.7%	16.7%	114.1%	104.3%