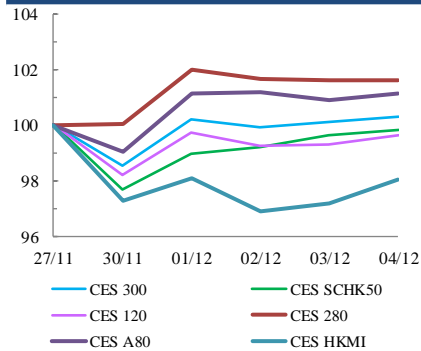




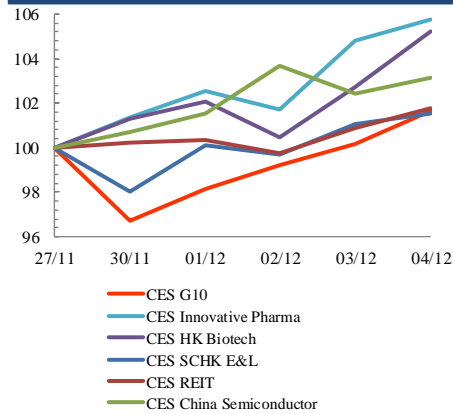
Index Performance Review (27 November 2020 – 4 December 2020)

- Hong Kong Exchanges and Clearing Limited (HKEX) on Friday announced specific plans to expand the Stock Connect. Mainland China investors will be able to buy shares of some Hong Kong-listed biotech companies expectedly from the end of this year. CES HK Biotech Index rose 5.2%.
- The three exchanges including HKEX, SSE and SZSE have agreed that STAR Market-listed shares that are constituent stocks of the SSE 180 Index and SSE 380 Index will be eligible for trading under the Shanghai-Hong Kong Stock Connect program. Relevant stocks listed on STAR market was also announced to be included in CES China Semiconductor Chips Index with the effect on 14 December. CES China Semiconductor Chips Index advanced 3.1%.

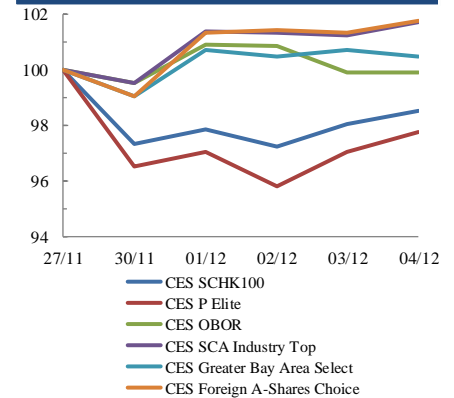
Size Indices Performance 27/11/2020 -4/12/2020



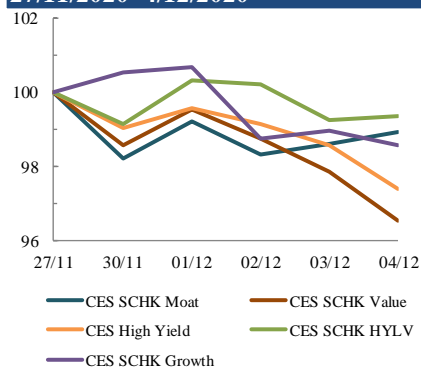
Sector Indices Performance 27/11/2020 -4/12/2020



Thematic Indices Performance 27/11/2020 -4/12/2020



Strategy Indices Performance 27/11/2020 -4/12/2020



	Return (%)	Index	Since 27/11/2020	YTD (2020)	Since SZ-HK Stock (5/12/2016)	Since SH-HK Stock (17/11/2014)
Size Indices Performance						
CES 300		5,489.66	0.3%	14.8%	47.0%	69.8%
CES 120		8,272.91	-0.4%	15.5%	59.3%	100.7%
CES 280		7,953.05	1.6%	25.2%	31.1%	54.9%
CES A80		9,745.97	1.1%	17.5%	57.6%	126.5%
CES HKMI		9,002.91	-2.0%	12.9%	60.8%	58.6%
CES SCHK50		3,049.30	-0.2%	-1.9%	22.8%	18.3%
Sector Indices Performance						
CES G10		4,951.04	1.6%	-12.3%	15.3%	-25.8%
CES HK Biotech		9,812.05	5.2%	53.3%	289.3%	n.a.
CES Innovative Pharma		14,399.35	5.8%	46.7%	157.5%	209.0%
CES SCHK E&L		4,759.04	1.5%	23.0%	31.3%	6.6%
CES REIT		2,710.96	1.8%	-22.7%	-11.3%	-4.2%
CES China Semiconductor Chips		9,158.70	3.1%	57.0%	99.1%	156.9%
Thematic Indices Performance						
CES SCHK 100		6,320.48	-1.5%	11.8%	44.6%	37.1%
CES OBOR		2,020.65	-0.1%	16.2%	21.2%	n.a.
CES P Elite		9,939.59	-2.3%	56.5%	162.7%	182.1%
CES SCA Industry Top		5,745.59	1.7%	26.0%	91.8%	174.1%
CES Greater Bay Area Select		2,790.17	0.5%	16.5%	56.6%	n.a.
CES Foreign A-Shares Choice		3,669.54	1.7%	25.3%	n.a.	n.a.
Strategy Indices Performance						
CES High Yield		3,408.43	-2.6%	-17.0%	25.8%	16.9%
CES SCHK HYL V		2,608.10	-0.6%	-11.7%	-6.0%	-5.0%
CES SCHK Moat		4,672.13	-1.1%	18.8%	82.1%	73.5%
CES SCHK Value		4,268.31	-3.5%	-14.6%	39.8%	43.9%
CES SCHK Growth		6,933.69	-1.4%	15.0%	111.0%	101.4%