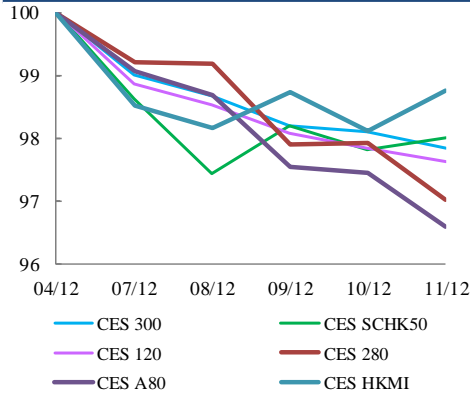


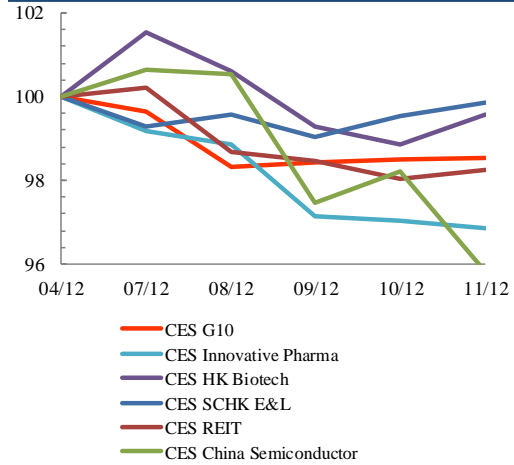


Index Performance Review (4 December 2020 – 11 December 2020)

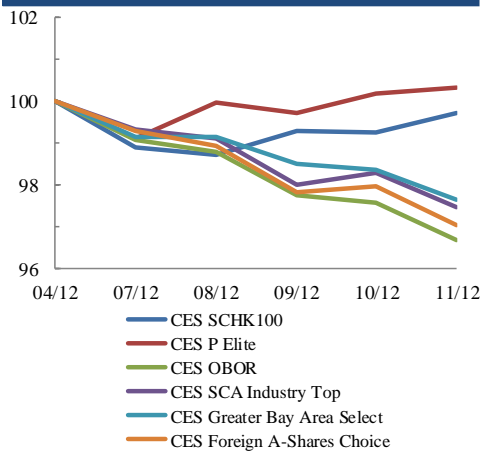
Size Indices Performance
4/12/2020 -11/12/2020



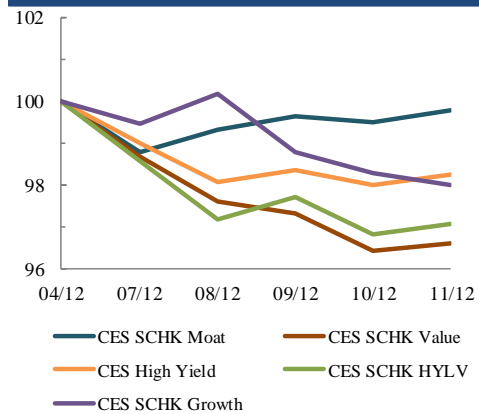
Sector Indices Performance
4/12/2020 -11/12/2020



Thematic Indices Performance
4/12/2020 -11/12/2020



Strategy Indices Performance
4/12/2020 -11/12/2020



Return (%)	Index	Since 04/12/2020	YTD (2020)	Since SZ-HK Stock (5/12/2016)	Since SH-HK Stock (17/11/2014)
Size Indices Performance					
	CES 300	5,370.83	-2.2%	12.3%	43.8%
	CES 120	8,075.92	-2.4%	12.7%	55.5%
	CES 280	7,715.55	-3.0%	21.4%	27.1%
	CES A80	9,414.10	-3.4%	13.5%	52.2%
	CES HKMI	8,890.70	-1.2%	11.4%	58.8%
	CES SCHK50	2,988.64	-2.0%	-3.8%	20.3%
Sector Indices Performance					
	CES G10	4,878.74	-1.5%	-13.5%	13.7%
	CES HK Biotech	9,769.79	-0.4%	52.6%	287.6%
	CES Innovative Pharma	13,947.59	-3.1%	42.1%	149.4%
	CES SCHK E&L	4,751.99	-0.1%	22.8%	31.1%
	CES REIT	2,663.75	-1.7%	-24.0%	-12.9%
	CES China Semiconductor Chips	8,775.70	-4.2%	50.5%	90.7%
Thematic Indices Performance					
	CES SCHK 100	6,302.01	-0.3%	11.5%	44.2%
	CES OBOR	1,953.43	-3.3%	12.3%	17.2%
	CES P Elite	9,972.04	0.3%	57.0%	163.6%
	CES SCA Industry Top	5,599.15	-2.5%	22.8%	86.9%
	CES Greater Bay Area Select	2,724.29	-2.4%	13.8%	52.9%
	CES Foreign A-Shares Choice	3,561.07	-3.0%	21.6%	n.a.
Strategy Indices Performance					
	CES High Yield	3,349.17	-1.7%	-18.4%	23.6%
	CES SCHK HYL V	2,531.44	-2.9%	-14.3%	-8.8%
	CES SCHK Moat	4,662.65	-0.2%	18.5%	81.7%
	CES SCHK Value	4,123.43	-3.4%	-17.5%	35.0%
	CES SCHK Growth	6,795.51	-2.0%	12.8%	106.8%