

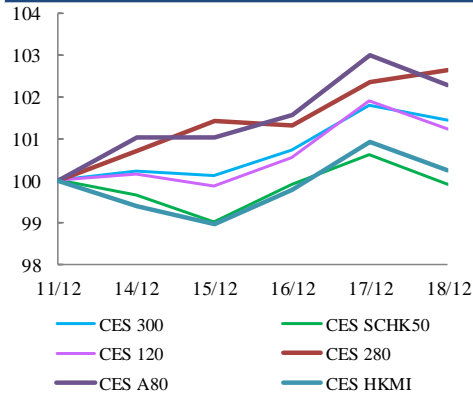


中華交易服務

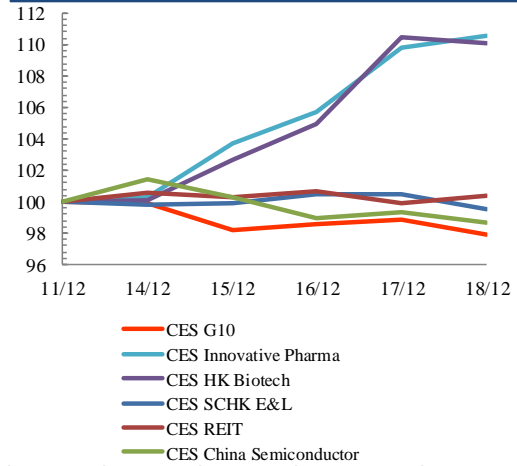
CHINA
EXCHANGES
SERVICES

Index Performance Review (11 December 2020 – 18 December 2020)

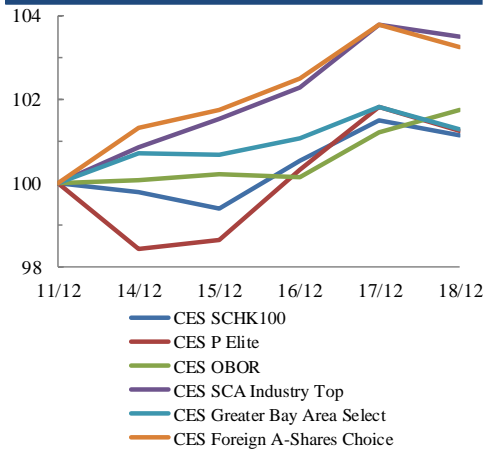
Size Indices Performance 11/12/2020 -18/12/2020



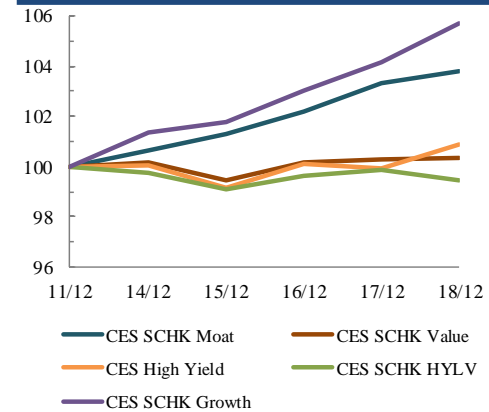
Sector Indices Performance 11/12/2020 -18/12/2020



Thematic Indices Performance 11/12/2020 -18/12/2020



Strategy Indices Performance 11/12/2020 -18/12/2020



Return (%)	Index	Since 11/12/2020	YTD (2020)	Since SZ-HK Stock (5/12/2016)	Since SH-HK Stock (17/11/2014)	
Size Indices Performance						
	CES 300	5,447.72	1.4%	13.9%	45.9%	68.5%
	CES 120	8,175.60	1.2%	14.1%	57.4%	98.3%
	CES 280	7,918.13	2.6%	24.6%	30.5%	54.2%
	CES A80	9,627.52	2.3%	16.1%	55.7%	123.8%
	CES HKMI	8,913.96	0.3%	11.7%	59.2%	57.0%
	CES SCHK50	2,985.77	-0.1%	-3.9%	20.2%	15.8%
Sector Indices Performance						
	CES G10	4,778.73	-2.0%	-15.3%	11.3%	-28.3%
	CES HK Biotech	10,758.25	10.1%	68.1%	326.8%	n.a.
	CES Innovative Pharma	15,420.71	10.6%	57.1%	175.8%	231.0%
	CES SCHK E&L	4,728.74	-0.5%	22.2%	30.4%	6.0%
	CES REIT	2,674.43	0.4%	-23.7%	-12.5%	-5.5%
	CES China Semiconductor Chips	8,657.48	-1.3%	48.4%	88.2%	142.8%
Thematic Indices Performance						
	CES SCHK 100	6,373.14	1.1%	12.8%	45.8%	38.2%
	CES OBOR	1,987.68	1.8%	14.3%	19.2%	n.a.
	CES P Elite	10,095.76	1.2%	59.0%	166.9%	186.5%
	CES SCA Industry Top	5,795.03	3.5%	27.1%	93.4%	176.4%
	CES Greater Bay Area Select	2,759.63	1.3%	15.2%	54.8%	n.a.
	CES Foreign A-Shares Choice	3,676.20	3.2%	25.6%	n.a.	n.a.
Strategy Indices Performance						
	CES High Yield	3,377.94	0.9%	-17.7%	24.7%	15.9%
	CES SCHK HYL V	2,517.90	-0.5%	-14.8%	-9.3%	-8.3%
	CES SCHK Moat	4,840.80	3.8%	23.1%	88.6%	79.8%
	CES SCHK Value	4,136.93	0.3%	-17.3%	35.5%	39.5%
	CES SCHK Growth	7,181.22	5.7%	19.2%	118.5%	108.6%