

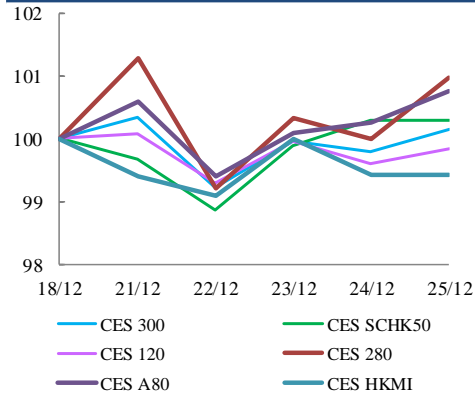


中華交易服務

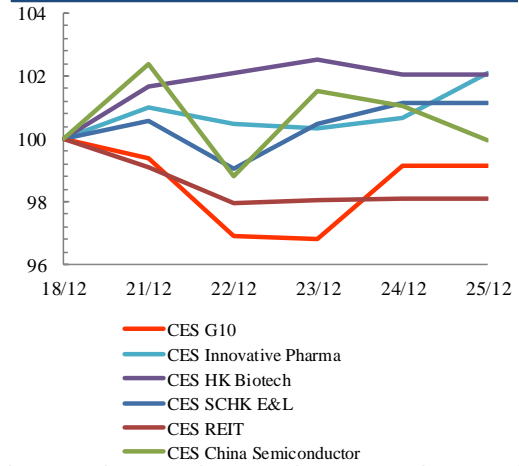
CHINA
EXCHANGES
SERVICES

Index Performance Review (18 December 2020 – 25 December 2020)

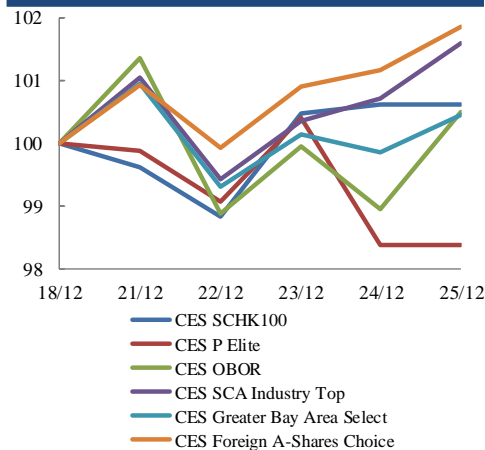
Size Indices Performance
18/12/2020 -25/12/2020



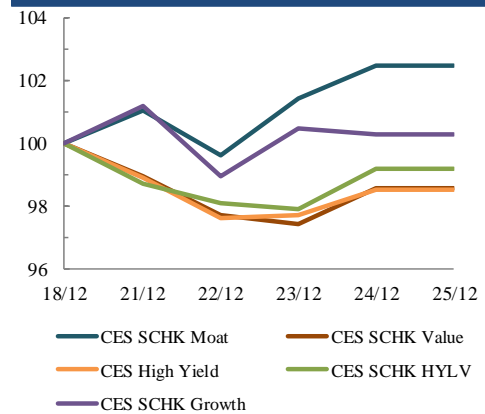
Sector Indices Performance
18/12/2020 -25/12/2020



Thematic Indices Performance
18/12/2020 -25/12/2020



Strategy Indices Performance
18/12/2020 -25/12/2020



	Return (%)	Index	Since 18/12/2020	YTD (2020)	Since SZ-HK Stock (5/12/2016)	Since SH-HK Stock (17/11/2014)
Size Indices Performance						
CES 300		5,455.98	0.2%	14.1%	46.1%	68.7%
CES 120		8,162.66	-0.2%	13.9%	57.1%	98.0%
CES 280		7,995.30	1.0%	25.8%	31.8%	55.8%
CES A80		9,701.11	0.8%	17.0%	56.8%	125.5%
CES HKMI		8,861.95	-0.6%	11.1%	58.3%	56.1%
CES SCHK50		2,994.77	0.3%	-3.6%	20.6%	16.2%
Sector Indices Performance						
CES G10		4,738.04	-0.9%	-16.0%	10.4%	-29.0%
CES HK Biotech		10,979.71	2.1%	71.5%	335.6%	n.a.
CES Innovative Pharma		15,740.43	2.1%	60.3%	181.5%	237.8%
CES SCHK E&L		4,783.54	1.2%	23.6%	31.9%	7.2%
CES REIT		2,624.08	-1.9%	-25.1%	-14.2%	-7.2%
CES China Semiconductor Chips		8,655.05	0.0%	48.4%	88.1%	142.8%
Thematic Indices Performance						
CES SCHK 100		6,412.47	0.6%	13.4%	46.7%	39.1%
CES OBOR		1,997.54	0.5%	14.9%	19.8%	n.a.
CES P Elite		9,932.93	-1.6%	56.4%	162.6%	181.9%
CES SCA Industry Top		5,887.18	1.6%	29.2%	96.5%	180.8%
CES Greater Bay Area Select		2,772.18	0.5%	15.8%	55.6%	n.a.
CES Foreign A-Shares Choice		3,744.63	1.9%	27.9%	n.a.	n.a.
Strategy Indices Performance						
CES High Yield		3,327.59	-1.5%	-19.0%	22.8%	14.2%
CES SCHK HYL V		2,497.82	-0.8%	-15.4%	-10.0%	-9.0%
CES SCHK Moat		4,960.81	2.5%	26.1%	93.3%	84.2%
CES SCHK Value		4,077.01	-1.4%	-18.5%	33.5%	37.5%
CES SCHK Growth		7,202.97	0.3%	19.5%	119.2%	109.2%