

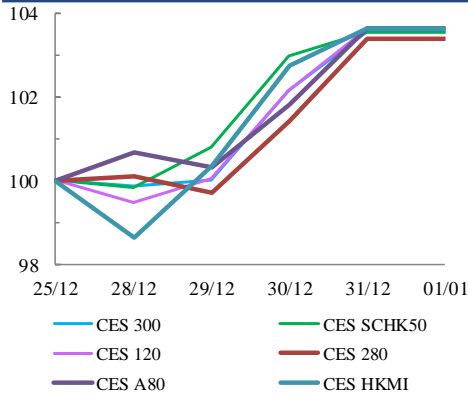


中華交易服務

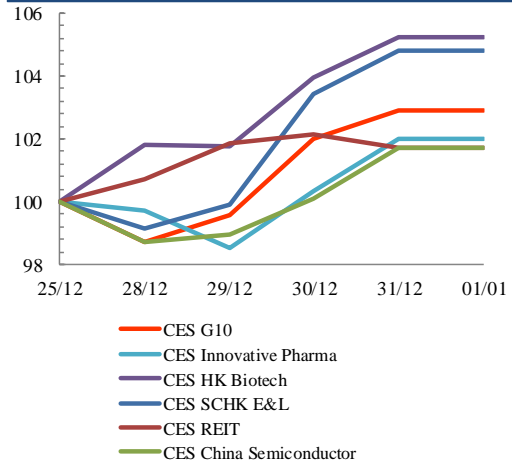
CHINA  
EXCHANGES  
SERVICES

## Index Performance Review (25 December 2020 – 1 January 2021)

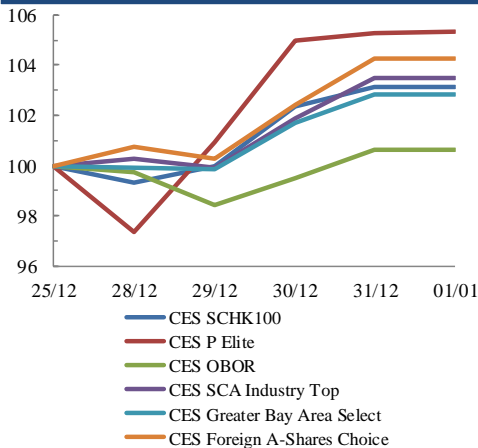
### Size Indices Performance 25/12/2020 -1/1/2021



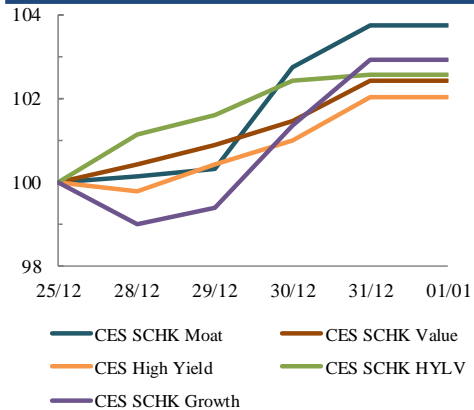
### Sector Indices Performance 25/12/2020 -1/1/2021



### Thematic Indices Performance 25/12/2020 -1/1/2021



### Strategy Indices Performance 25/12/2020 -1/1/2021



Return (%)	Index	Since 25/12/2020	YTD (2020)	Since SZ-HK Stock (5/12/2016)	Since SH-HK Stock (17/11/2014)
<b>Size Indices Performance</b>					
	CES 300	5,648.96	3.5%	18.1%	51.3%
	CES 120	8,458.78	3.6%	18.1%	62.8%
	CES 280	8,267.66	3.4%	30.1%	36.2%
	CES A80	10,053.97	3.6%	21.2%	62.6%
	CES HKMI	9,185.80	3.7%	15.1%	64.1%
	CES SCHK50	3,101.22	3.6%	-0.2%	24.8%
<b>Sector Indices Performance</b>					
	CES G10	4,874.94	2.9%	-13.6%	13.6%
	CES HK Biotech	11,556.13	5.2%	80.6%	358.4%
	CES Innovative Pharma	16,056.15	2.0%	63.6%	187.1%
	CES SCHK E&L	5,013.14	4.8%	29.5%	38.3%
	CES REIT	2,668.82	1.7%	-23.9%	-12.7%
	CES China Semiconductor Chips	8,801.89	1.7%	50.9%	91.3%
<b>Thematic Indices Performance</b>					
	CES SCHK 100	6,612.16	3.1%	17.0%	51.3%
	CES OBOR	2,010.46	0.6%	15.6%	20.6%
	CES P Elite	10,460.49	5.3%	64.7%	176.5%
	CES SCA Industry Top	6,093.76	3.5%	33.7%	103.4%
	CES Greater Bay Area Select	2,851.10	2.8%	19.1%	60.0%
	CES Foreign A-Shares Choice	3,904.15	4.3%	33.3%	n.a.
<b>Strategy Indices Performance</b>					
	CES High Yield	3,395.63	2.0%	-17.3%	25.3%
	CES SCHK HYL V	2,561.57	2.6%	-13.3%	-7.7%
	CES SCHK Moat	5,146.89	3.8%	30.8%	100.6%
	CES SCHK Value	4,175.28	2.4%	-16.5%	36.7%
	CES SCHK Growth	7,413.20	2.9%	23.0%	125.6%