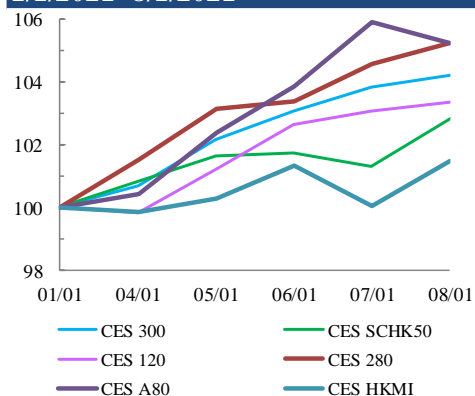
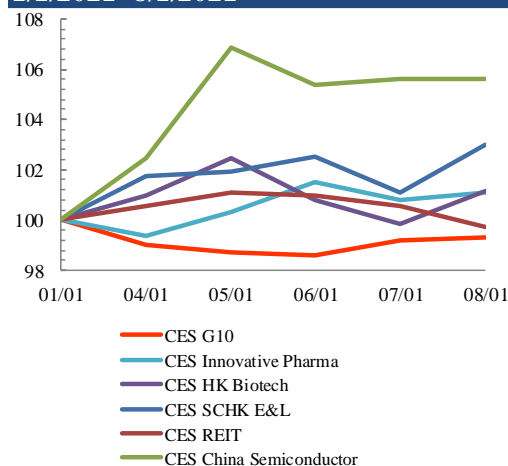


## Index Performance Review (1 January 2021 – 8 January 2021)

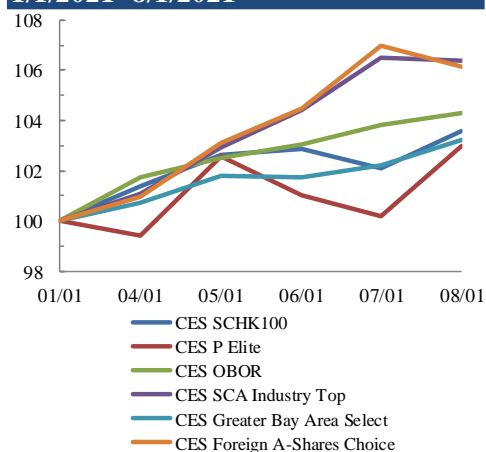
### Size Indices Performance 1/1/2021 - 8/1/2021



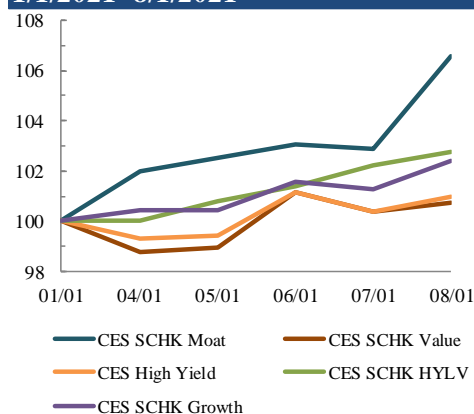
### Sector Indices Performance 1/1/2021 - 8/1/2021



### Thematic Indices Performance 1/1/2021 - 8/1/2021



### Strategy Indices Performance 1/1/2021 - 8/1/2021



Return (%)	Index	Since 01/01/2021	YTD (2020)	Since SZ-HK Stock (5/12/2016)	Since SH-HK Stock (17/11/2014)	
<b>Size Indices Performance</b>						
	CES 300	5,887.67	4.2%	4.2%	57.7%	82.1%
	CES 120	8,742.64	3.4%	3.4%	68.3%	112.1%
	CES 280	8,700.87	5.2%	5.2%	43.4%	69.5%
	CES A80	10,580.62	5.2%	5.2%	71.1%	145.9%
	CES HKMI	9,320.90	1.5%	1.5%	66.5%	64.2%
	CES SCHK50	3,189.45	2.8%	2.8%	28.4%	23.7%
<b>Sector Indices Performance</b>						
	CES G10	4,841.17	-0.7%	-0.7%	12.8%	-27.4%
	CES HK Biotech	11,691.80	1.2%	1.2%	363.8%	n.a.
	CES Innovative Pharma	16,230.08	1.1%	1.1%	190.2%	248.3%
	CES SCHK E&L	5,163.91	3.0%	3.0%	42.4%	15.7%
	CES REIT	2,661.34	-0.3%	-0.3%	-13.0%	-5.9%
	CES China Semiconductor Chips	9,296.59	5.6%	5.6%	102.1%	160.7%
<b>Thematic Indices Performance</b>						
	CES SCHK 100	6,848.75	3.6%	3.6%	56.7%	48.5%
	CES OBOR	2,097.35	4.3%	4.3%	25.8%	n.a.
	CES P Elite	10,773.86	3.0%	3.0%	184.8%	205.8%
	CES SCA Industry Top	6,483.34	6.4%	6.4%	116.4%	209.3%
	CES Greater Bay Area Select	2,942.63	3.2%	3.2%	65.1%	n.a.
	CES Foreign A-Shares Choice	4,143.62	6.1%	6.1%	n.a.	n.a.
<b>Strategy Indices Performance</b>						
	CES High Yield	3,429.66	1.0%	1.0%	26.6%	17.7%
	CES SCHK HYL V	2,632.28	2.8%	2.8%	-5.2%	-4.1%
	CES SCHK Moat	5,485.93	6.6%	6.6%	113.8%	103.7%
	CES SCHK Value	4,206.23	0.7%	0.7%	37.8%	41.9%
	CES SCHK Growth	7,589.56	2.4%	2.4%	130.9%	120.4%