

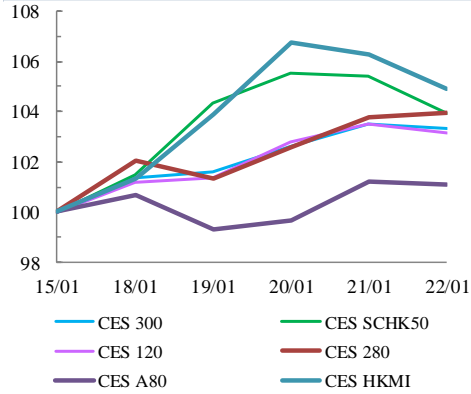


中華交易服務

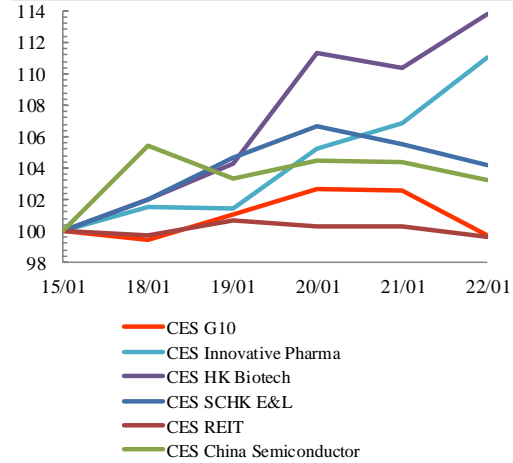
CHINA
EXCHANGES
SERVICES

Index Performance Review (15 January 2021 – 22 January 2021)

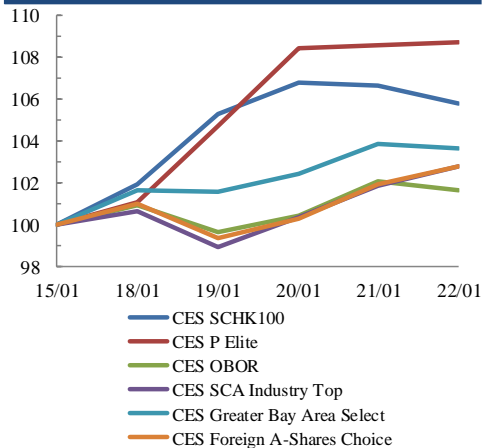
Size Indices Performance 15/1/2021 -22/1/2021



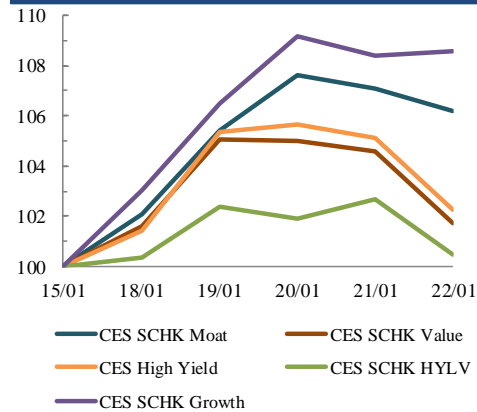
Sector Indices Performance 15/1/2021 -22/1/2021



Thematic Indices Performance 15/1/2021 -22/1/2021



Strategy Indices Performance 15/1/2021 -22/1/2021



Return (%)	Index	Since 15/01/2021	YTD (2020)	Since SZ-HK Stock (5/12/2016)	Since SH-HK Stock (17/11/2014)
Size Indices Performance					
	CES 300	6,157.99	3.3%	9.0%	64.9%
	CES 120	9,174.57	3.2%	8.5%	76.6%
	CES 280	8,973.38	3.9%	8.5%	47.9%
	CES A80	10,667.71	1.1%	6.1%	72.5%
	CES HKMI	10,128.51	4.9%	10.3%	80.9%
	CES SCHK50	3,399.46	3.9%	9.6%	36.9%
Sector Indices Performance					
	CES G10	4,535.09	-0.3%	-7.0%	5.7%
	CES HK Biotech	13,747.89	13.8%	19.0%	445.4%
	CES Innovative Pharma	18,227.14	11.0%	13.5%	226.0%
	CES SCHK E&L	5,260.25	4.2%	4.9%	45.1%
	CES REIT	2,647.54	-0.4%	-0.8%	-13.4%
	CES China Semiconductor Chips	9,979.29	3.2%	13.4%	116.9%
Thematic Indices Performance					
	CES SCHK 100	7,320.05	5.8%	10.7%	67.5%
	CES OBOR	2,135.03	1.6%	6.2%	28.1%
	CES P Elite	11,760.23	8.7%	12.4%	210.9%
	CES SCA Industry Top	6,572.05	2.8%	7.8%	119.4%
	CES Greater Bay Area Select	3,078.74	3.7%	8.0%	72.8%
	CES Foreign A-Shares Choice	4,204.95	2.7%	7.7%	n.a.
Strategy Indices Performance					
	CES High Yield	3,565.44	2.2%	5.0%	31.6%
	CES SCHK HYL V	2,715.87	0.5%	6.0%	-2.2%
	CES SCHK Moat	5,631.69	6.2%	9.4%	119.4%
	CES SCHK Value	4,381.46	1.7%	4.9%	43.5%
	CES SCHK Growth	8,047.92	8.6%	8.6%	144.9%