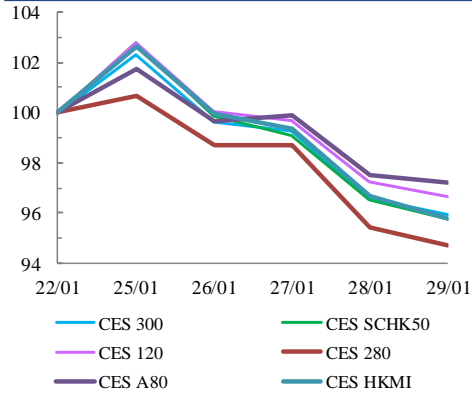


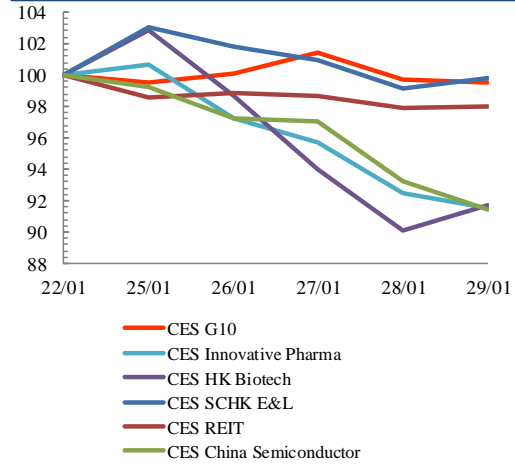


Index Performance Review (22 January 2021 – 29 January 2021)

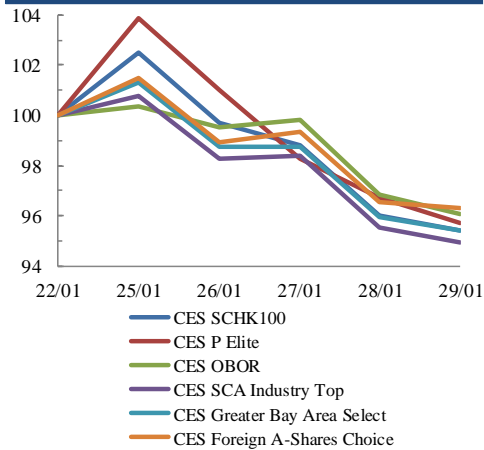
Size Indices Performance
22/1/2021 -29/1/2021



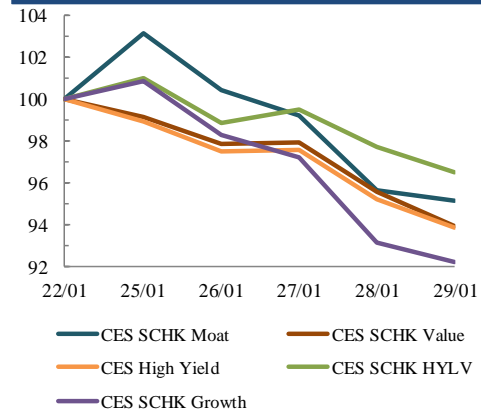
Sector Indices Performance
22/1/2021 -29/1/2021



Thematic Indices Performance
22/1/2021 -29/1/2021



Strategy Indices Performance
22/1/2021 -29/1/2021



Return (%)	Index	Since 22/01/2021	YTD (2020)	Since SZ-HK Stock (5/12/2016)	Since SH-HK Stock (17/11/2014)	
Size Indices Performance						
	CES 300	5,907.28	-4.1%	4.6%	58.2%	82.7%
	CES 120	8,867.25	-3.3%	4.8%	70.7%	115.1%
	CES 280	8,496.99	-5.3%	2.8%	40.0%	65.5%
	CES A80	10,369.39	-2.8%	3.1%	67.7%	141.0%
	CES HKMI	9,703.06	-4.2%	5.6%	73.3%	70.9%
	CES SCHK50	3,254.72	-4.3%	4.9%	31.0%	26.3%
Sector Indices Performance						
	CES G10	4,514.29	-0.5%	-7.4%	5.2%	-32.3%
	CES HK Biotech	12,613.97	-8.2%	9.2%	400.4%	n.a.
	CES Innovative Pharma	16,681.69	-8.5%	3.9%	198.3%	258.0%
	CES SCHK E&L	5,252.23	-0.2%	4.8%	44.9%	17.7%
	CES REIT	2,594.07	-2.0%	-2.8%	-15.2%	-8.3%
	CES China Semiconductor Chips	9,120.82	-8.6%	3.6%	98.2%	155.8%
Thematic Indices Performance						
	CES SCHK 100	6,984.74	-4.6%	5.6%	59.8%	51.5%
	CES OBOR	2,051.45	-3.9%	2.0%	23.1%	n.a.
	CES P Elite	11,254.13	-4.3%	7.6%	197.5%	219.4%
	CES SCA Industry Top	6,239.81	-5.1%	2.4%	108.3%	197.6%
	CES Greater Bay Area Select	2,937.91	-4.6%	3.0%	64.8%	n.a.
	CES Foreign A-Shares Choice	4,050.66	-3.7%	3.8%	n.a.	n.a.
Strategy Indices Performance						
	CES High Yield	3,347.25	-6.1%	-1.4%	23.6%	14.8%
	CES SCHK HYL V	2,621.45	-3.5%	2.3%	-5.6%	-4.5%
	CES SCHK Moat	5,357.52	-4.9%	4.1%	108.3%	98.9%
	CES SCHK Value	4,114.92	-6.1%	-1.4%	34.8%	38.8%
	CES SCHK Growth	7,421.42	-7.8%	0.1%	125.8%	115.5%