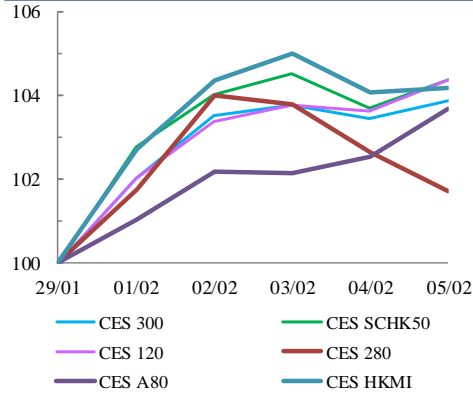


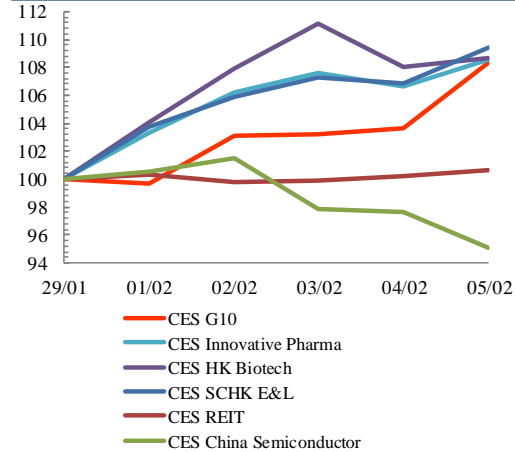


Index Performance Review (29 January 2021 – 5 February 2021)

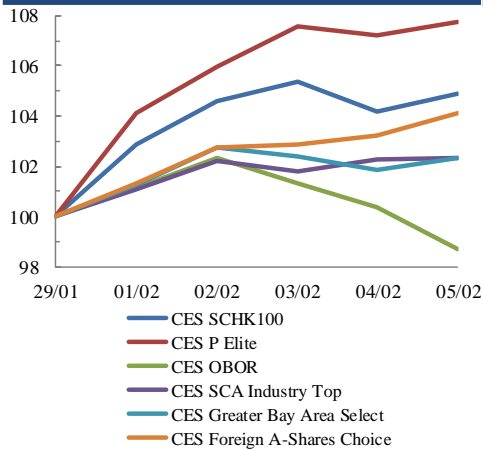
Size Indices Performance  
29/1/2021 -5/2/2021



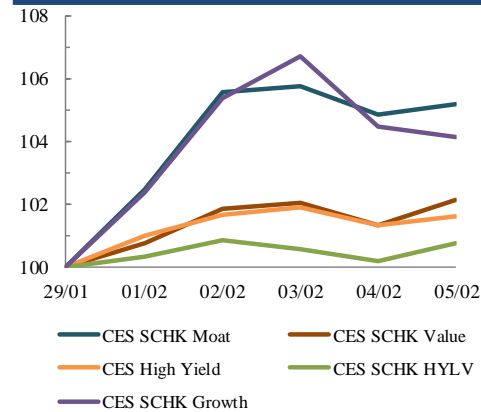
Sector Indices Performance  
29/1/2021 -5/2/2021



Thematic Indices Performance  
29/1/2021 -5/2/2021



Strategy Indices Performance  
29/1/2021 -5/2/2021



	Return (%)	Index	Since 29/01/2021	YTD (2020)	Since SZ-HK Stock (5/12/2016)	Since SH-HK Stock (17/11/2014)
<b>Size Indices Performance</b>						
CES 300		6,135.96	3.9%	8.6%	64.3%	89.7%
CES 120		9,253.37	4.4%	9.4%	78.1%	124.4%
CES 280		8,642.70	1.7%	4.5%	42.4%	68.4%
CES A80		10,748.84	3.7%	6.9%	73.8%	149.8%
CES HKMI		10,107.73	4.2%	10.0%	80.6%	78.0%
CES SCHK50		3,397.10	4.4%	9.5%	36.8%	31.8%
<b>Sector Indices Performance</b>						
CES G10		4,892.07	8.4%	0.4%	14.0%	-26.6%
CES HK Biotech		13,711.95	8.7%	18.7%	444.0%	n.a.
CES Innovative Pharma		18,106.31	8.5%	12.8%	223.8%	288.6%
CES SCHK E&L		5,749.37	9.5%	14.7%	58.6%	28.8%
CES REIT		2,610.48	0.6%	-2.2%	-14.6%	-7.7%
CES China Semiconductor Chips		8,673.82	-4.9%	-1.5%	88.5%	143.3%
<b>Thematic Indices Performance</b>						
CES SCHK 100		7,324.73	4.9%	10.8%	67.6%	58.8%
CES OBOR		2,025.00	-1.3%	0.7%	21.5%	n.a.
CES P Elite		12,124.04	7.7%	15.9%	220.5%	244.1%
CES SCA Industry Top		6,383.75	2.3%	4.8%	113.1%	204.5%
CES Greater Bay Area Select		3,005.68	2.3%	5.4%	68.7%	n.a.
CES Foreign A-Shares Choice		4,218.71	4.1%	8.1%	n.a.	n.a.
<b>Strategy Indices Performance</b>						
CES High Yield		3,401.83	1.6%	0.2%	25.6%	16.7%
CES SCHK HYL V		2,640.91	0.7%	3.1%	-4.9%	-3.8%
CES SCHK Moat		5,636.25	5.2%	9.5%	119.6%	109.3%
CES SCHK Value		4,203.16	2.1%	0.7%	37.7%	41.8%
CES SCHK Growth		7,730.33	4.2%	4.3%	135.2%	124.5%