

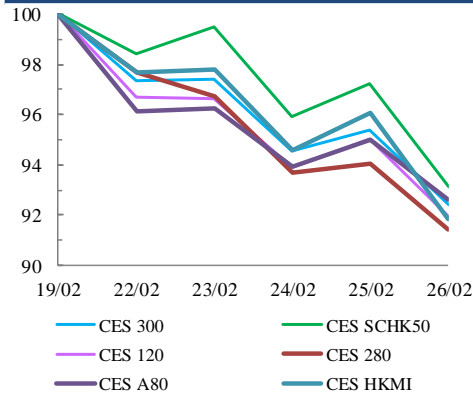


中華交易服務

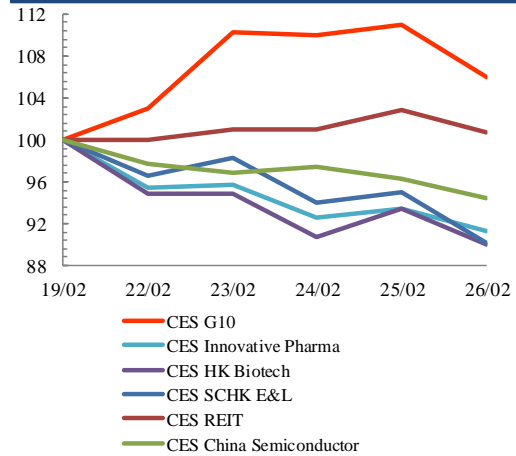
CHINA
EXCHANGES
SERVICES

Index Performance Review (19 February 2021 – 26 February 2021)

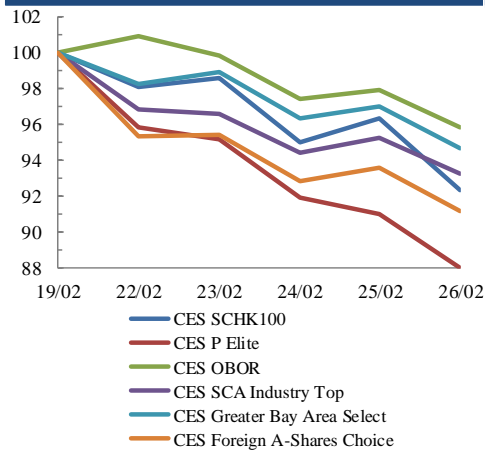
Size Indices Performance 19/2/2021 -26/2/2021



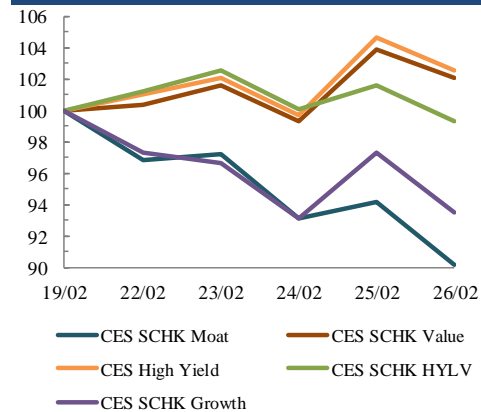
Sector Indices Performance 19/2/2021 -26/2/2021



Thematic Indices Performance 19/2/2021 -26/2/2021



Strategy Indices Performance 19/2/2021 -26/2/2021



Return (%)	Index	Since 19/02/2021	YTD (2020)	Since SZ-HK Stock (5/12/2016)	Since SH-HK Stock (17/11/2014)	
Size Indices Performance						
	CES 300	5,924.25	-7.6%	4.9%	58.7%	83.2%
	CES 120	8,836.86	-8.1%	4.5%	70.1%	114.3%
	CES 280	8,416.62	-8.6%	1.8%	38.7%	64.0%
	CES A80	10,391.44	-7.4%	3.4%	68.0%	141.5%
	CES HKMI	9,645.56	-8.2%	5.0%	72.3%	69.9%
	CES SCHK50	3,304.01	-6.9%	6.5%	33.0%	28.2%
Sector Indices Performance						
	CES G10	5,407.13	6.0%	10.9%	26.0%	-18.9%
	CES HK Biotech	12,534.39	-10.0%	8.5%	397.3%	n.a.
	CES Innovative Pharma	16,285.45	-8.7%	1.4%	191.2%	249.5%
	CES SCHK E&L	5,467.90	-9.9%	9.1%	50.8%	22.5%
	CES REIT	2,723.20	0.7%	2.0%	-10.9%	-3.7%
	CES China Semiconductor Chips	8,759.23	-5.5%	-0.5%	90.4%	145.7%
Thematic Indices Performance						
	CES SCHK 100	7,074.13	-7.7%	7.0%	61.9%	53.4%
	CES OBOR	2,094.06	-4.2%	4.2%	25.6%	n.a.
	CES P Elite	11,158.36	-12.0%	6.7%	195.0%	216.7%
	CES SCA Industry Top	6,274.58	-6.7%	3.0%	109.5%	199.3%
	CES Greater Bay Area Select	2,946.87	-5.3%	3.4%	65.4%	n.a.
	CES Foreign A-Shares Choice	4,006.44	-8.8%	2.6%	n.a.	n.a.
Strategy Indices Performance						
	CES High Yield	3,662.87	2.5%	7.9%	35.2%	25.7%
	CES SCHK HYL V	2,794.39	-0.7%	9.1%	0.7%	1.8%
	CES SCHK Moat	5,357.77	-9.8%	4.1%	108.8%	99.0%
	CES SCHK Value	4,491.07	2.1%	7.6%	47.1%	51.5%
	CES SCHK Growth	7,656.19	-6.5%	3.3%	133.0%	122.4%