

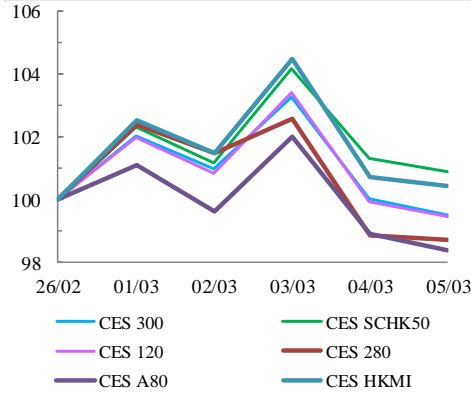


中華交易服務

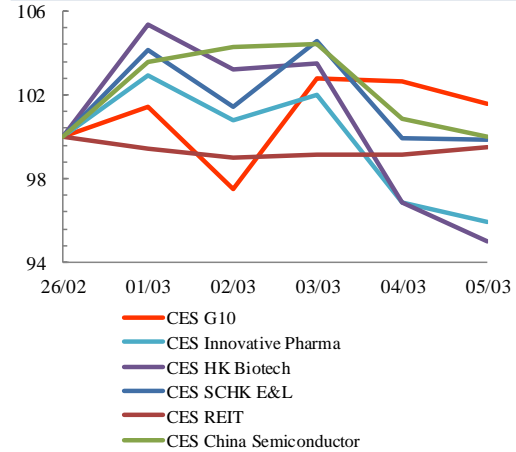
CHINA
EXCHANGES
SERVICES

Index Performance Review (26 February 2021 – 5 March 2021)

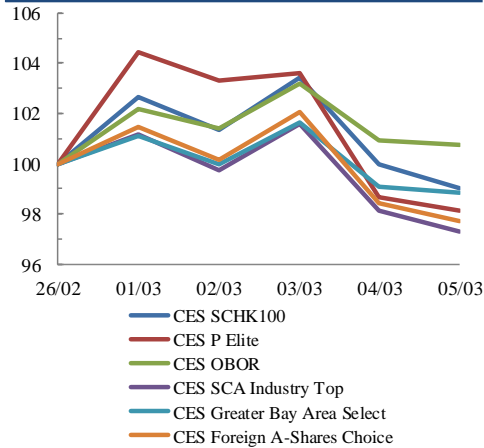
Size Indices Performance
26/2/2021 -5/3/2021



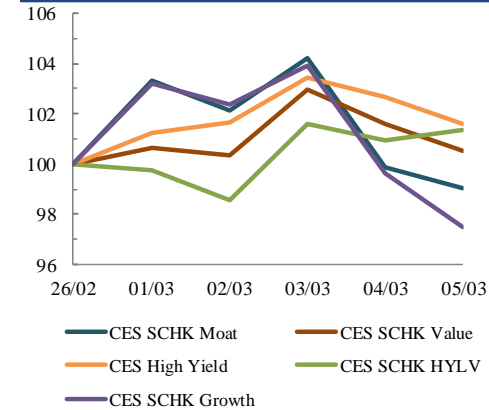
Sector Indices Performance
26/2/2021 -5/3/2021



Thematic Indices Performance
26/2/2021 -5/3/2021



Strategy Indices Performance
26/2/2021 -5/3/2021



Return (%)	Index	Since 26/02/2021	YTD (2020)	Since SZ-HK Stock (5/12/2016)	Since SH-HK Stock (17/11/2014)
Size Indices Performance					
CES 300	5,895.29	-0.5%	4.4%	57.9%	82.3%
CES 120	8,786.59	-0.6%	3.9%	69.1%	113.1%
CES 280	8,309.94	-1.3%	0.5%	36.9%	61.9%
CES A80	10,223.14	-1.6%	1.7%	65.3%	137.6%
CES HKMI	9,688.01	0.4%	5.5%	73.1%	70.6%
CES SCHK50	3,333.10	0.9%	7.5%	34.2%	29.3%
Sector Indices Performance					
CES G10	5,493.68	1.6%	12.7%	28.0%	-17.6%
CES HK Biotech	11,905.54	-5.0%	3.0%	372.3%	n.a.
CES Innovative Pharma	15,618.91	-4.1%	-2.7%	179.3%	235.2%
CES SCHK E&L	5,460.05	-0.1%	8.9%	50.6%	22.4%
CES REIT	2,709.45	-0.5%	1.5%	-11.4%	-4.2%
CES China Semiconductor Chips	8,761.34	0.0%	-0.5%	90.4%	145.7%
Thematic Indices Performance					
CES SCHK 100	7,006.56	-1.0%	6.0%	60.3%	51.9%
CES OBOR	2,110.31	0.8%	5.0%	26.6%	n.a.
CES P Elite	10,951.51	-1.9%	4.7%	189.5%	210.8%
CES SCA Industry Top	6,106.58	-2.7%	0.2%	103.8%	191.3%
CES Greater Bay Area Select	2,913.26	-1.1%	2.2%	63.5%	n.a.
CES Foreign A-Shares Choice	3,916.08	-2.3%	0.3%	n.a.	n.a.
Strategy Indices Performance					
CES High Yield	3,722.06	1.6%	9.6%	37.4%	27.7%
CES SCHK HYL V	2,831.60	1.3%	10.5%	2.0%	3.1%
CES SCHK Moat	5,306.38	-1.0%	3.1%	106.8%	97.0%
CES SCHK Value	4,513.54	0.5%	8.1%	47.8%	52.2%
CES SCHK Growth	7,463.50	-2.5%	0.7%	127.1%	116.8%