

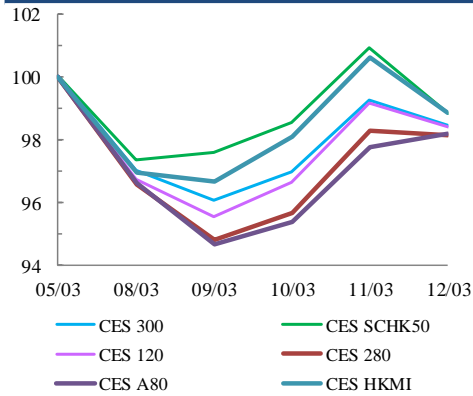


中華交易服務

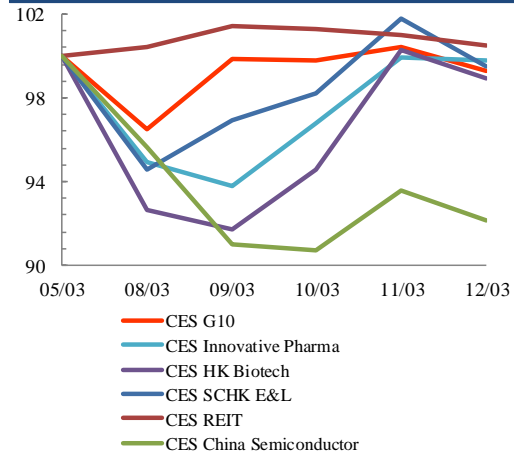
CHINA
EXCHANGES
SERVICES

Index Performance Review (5 March 2021 – 12 March 2021)

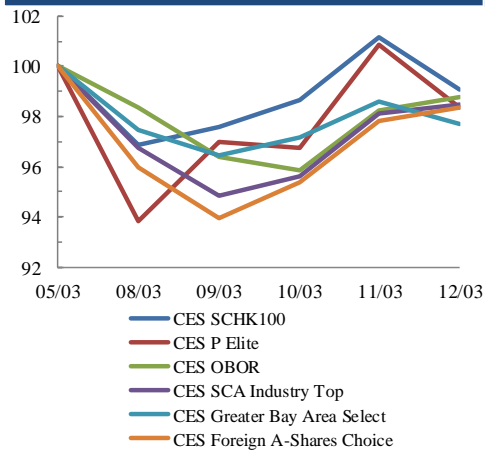
Size Indices Performance 5/3/2021 -12/3/2021



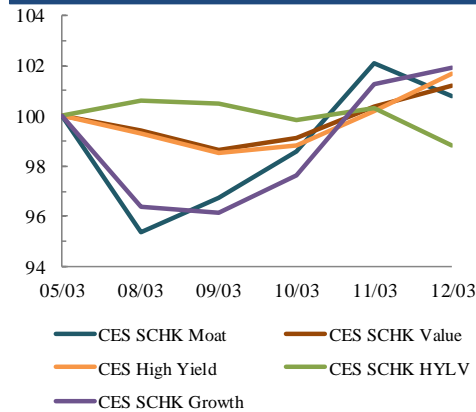
Sector Indices Performance 5/3/2021 -12/3/2021



Thematic Indices Performance 5/3/2021 -12/3/2021



Strategy Indices Performance 5/3/2021 -12/3/2021



	Return (%)	Index	Since 05/03/2021	YTD (2021)	Since SZ-HK Stock (5/12/2016)	Since SH-HK Stock (17/11/2014)
Size Indices Performance						
CES 300		5,803.87	-1.6%	2.7%	55.4%	79.5%
CES 120		8,647.99	-1.6%	2.2%	66.5%	109.8%
CES 280		8,155.42	-1.9%	-1.4%	34.4%	58.9%
CES A80		10,036.18	-1.8%	-0.2%	62.3%	133.3%
CES HKMI		9,576.79	-1.1%	4.3%	71.1%	68.7%
CES SCHK50		3,293.59	-1.2%	6.2%	32.6%	27.8%
Sector Indices Performance						
CES G10		5,453.36	-0.7%	11.9%	27.1%	-18.2%
CES HK Biotech		11,775.50	-1.1%	1.9%	367.2%	n.a.
CES Innovative Pharma		15,588.80	-0.2%	-2.9%	178.8%	234.6%
CES SCHK E&L		5,430.96	-0.5%	8.3%	49.8%	21.7%
CES REIT		2,721.95	0.5%	2.0%	-11.0%	-3.8%
CES China Semiconductor Chips		8,072.80	-7.9%	-8.3%	75.5%	126.4%
Thematic Indices Performance						
CES SCHK 100		6,941.17	-0.9%	5.0%	58.8%	50.5%
CES OBOR		2,083.89	-1.3%	3.7%	25.0%	n.a.
CES P Elite		10,773.25	-1.6%	3.0%	184.8%	205.8%
CES SCA Industry Top		6,015.13	-1.5%	-1.3%	100.8%	186.9%
CES Greater Bay Area Select		2,846.24	-2.3%	-0.2%	59.7%	n.a.
CES Foreign A-Shares Choice		3,852.80	-1.6%	-1.3%	n.a.	n.a.
Strategy Indices Performance						
CES High Yield		3,784.58	1.7%	11.5%	39.7%	29.8%
CES SCHK HYL V		2,798.50	-1.2%	9.2%	0.8%	1.9%
CES SCHK Moat		5,348.33	0.8%	3.9%	108.4%	98.6%
CES SCHK Value		4,567.10	1.2%	9.4%	49.6%	54.0%
CES SCHK Growth		7,604.97	1.9%	2.6%	131.4%	120.9%