

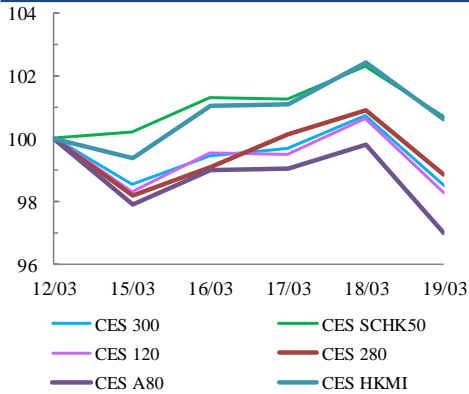


中華交易服務

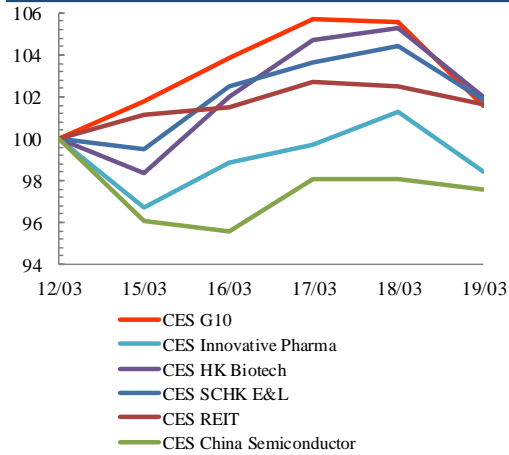
CHINA
EXCHANGES
SERVICES

Index Performance Review (12 March 2021 – 19 March 2021)

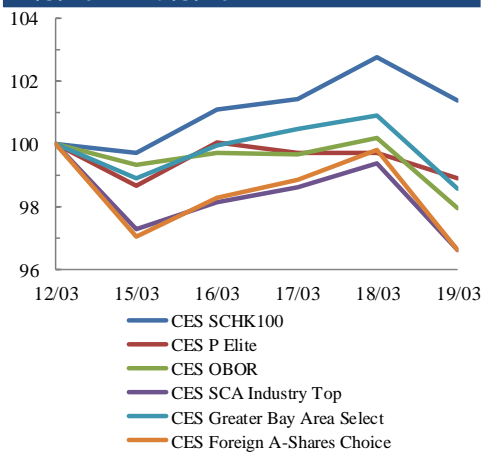
Size Indices Performance 12/3/2021 -19/3/2021



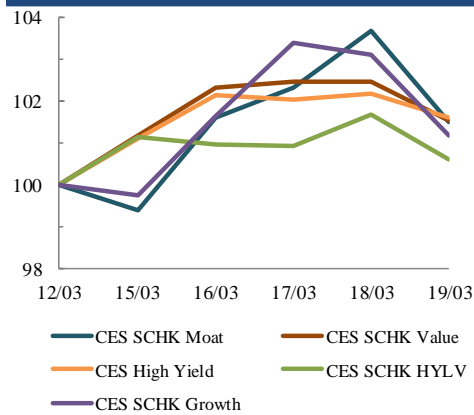
Sector Indices Performance 12/3/2021 -19/3/2021



Thematic Indices Performance 12/3/2021 -19/3/2021



Strategy Indices Performance 12/3/2021 -19/3/2021



Return (%)	Index	Since 12/03/2021	YTD (2021)	Since SZ-HK Stock (5/12/2016)	Since SH-HK Stock (17/11/2014)	
Size Indices Performance						
	CES 300	5,715.94	-1.5%	1.2%	53.1%	76.8%
	CES 120	8,498.42	-1.7%	0.5%	63.6%	106.1%
	CES 280	8,062.91	-1.1%	-2.5%	32.9%	57.1%
	CES A80	9,733.79	-3.0%	-3.2%	57.4%	126.2%
	CES HKMI	9,636.30	0.6%	4.9%	72.1%	69.7%
	CES SCHK50	3,315.94	0.7%	6.9%	33.5%	28.6%
Sector Indices Performance						
	CES G10	5,537.51	1.5%	13.6%	29.0%	-17.0%
	CES HK Biotech	12,009.49	2.0%	3.9%	376.4%	n.a.
	CES Innovative Pharma	15,342.47	-1.6%	-4.4%	174.4%	229.3%
	CES SCHK E&L	5,533.45	1.9%	10.4%	52.6%	24.0%
	CES REIT	2,766.77	1.6%	3.7%	-9.5%	-2.2%
	CES China Semiconductor Chips	7,874.12	-2.5%	-10.5%	71.1%	120.8%
Thematic Indices Performance						
	CES SCHK 100	7,037.59	1.4%	6.4%	61.0%	52.6%
	CES OBOR	2,041.47	-2.0%	1.5%	22.5%	n.a.
	CES P Elite	10,652.20	-1.1%	1.8%	181.6%	202.3%
	CES SCA Industry Top	5,811.63	-3.4%	-4.6%	94.0%	177.2%
	CES Greater Bay Area Select	2,805.13	-1.4%	-1.6%	57.4%	n.a.
	CES Foreign A-Shares Choice	3,722.31	-3.4%	-4.7%	n.a.	n.a.
Strategy Indices Performance						
	CES High Yield	3,845.04	1.6%	13.2%	41.9%	31.9%
	CES SCHK HYL V	2,814.99	0.6%	9.9%	1.4%	2.5%
	CES SCHK Moat	5,429.14	1.5%	5.5%	111.6%	101.6%
	CES SCHK Value	4,636.36	1.5%	11.0%	51.8%	56.4%
	CES SCHK Growth	7,695.27	1.2%	3.8%	134.2%	123.5%