

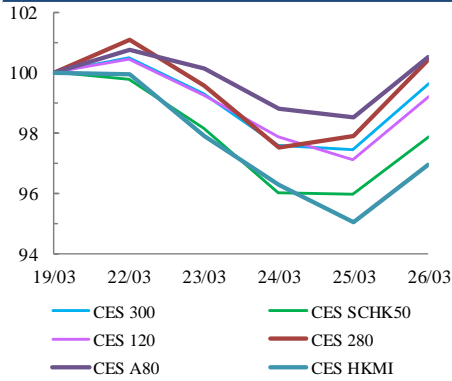


中華交易服務

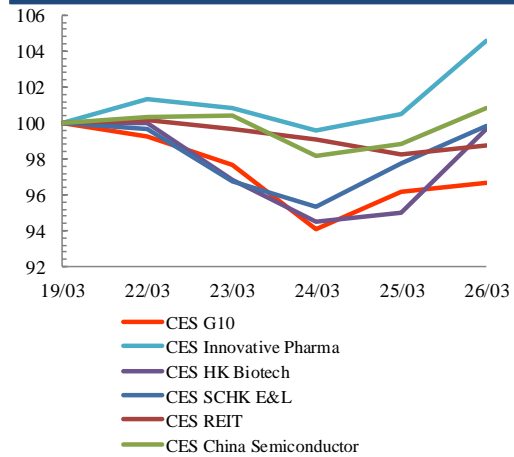
CHINA  
EXCHANGES  
SERVICES

Index Performance Review (19 March 2021 – 26 March 2021)

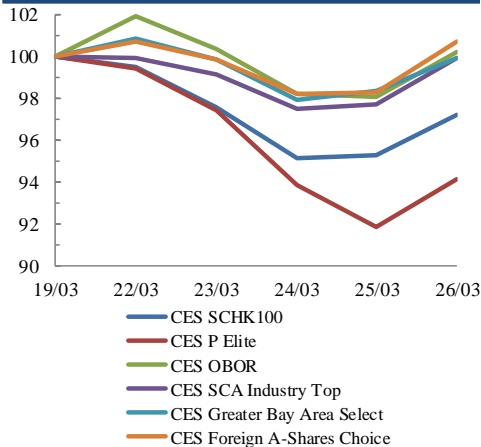
Size Indices Performance  
19/3/2021 -26/3/2021



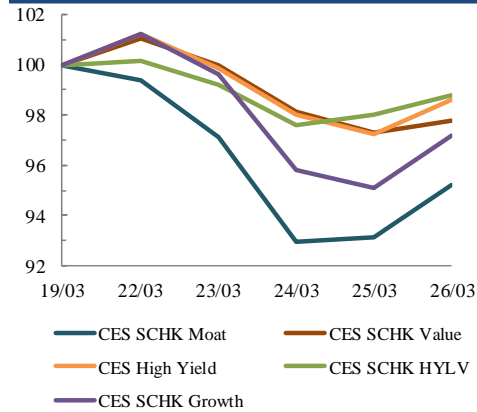
Sector Indices Performance  
19/3/2021 -26/3/2021



Thematic Indices Performance  
19/3/2021 -26/3/2021



Strategy Indices Performance  
19/3/2021 -26/3/2021



Return (%)	Index	Since 19/03/2021	YTD (2021)	Since SZ-HK Stock (5/12/2016)	Since SH-HK Stock (17/11/2014)	
<b>Size Indices Performance</b>						
	CES 300	5,695.26	-0.4%	0.8%	52.5%	76.1%
	CES 120	8,432.16	-0.8%	-0.3%	62.3%	104.5%
	CES 280	8,096.43	0.4%	-2.1%	33.4%	57.7%
	CES A80	9,785.16	0.5%	-2.7%	58.2%	127.4%
	CES HKMI	9,343.97	-3.0%	1.7%	66.9%	64.6%
	CES SCHK50	3,245.74	-2.1%	4.7%	30.7%	25.9%
<b>Sector Indices Performance</b>						
	CES G10	5,351.65	-3.4%	9.8%	24.7%	-19.8%
	CES HK Biotech	11,966.59	-0.4%	3.6%	374.7%	n.a.
	CES Innovative Pharma	16,048.06	4.6%	-0.1%	187.0%	244.4%
	CES SCHK E&L	5,521.74	-0.2%	10.1%	52.3%	23.7%
	CES REIT	2,732.29	-1.2%	2.4%	-10.6%	-3.4%
	CES China Semiconductor Chips	7,937.42	0.8%	-9.8%	72.5%	122.6%
<b>Thematic Indices Performance</b>						
	CES SCHK 100	6,841.03	-2.8%	3.5%	56.5%	48.4%
	CES OBOR	2,045.47	0.2%	1.7%	22.7%	n.a.
	CES P Elite	10,025.11	-5.9%	-4.2%	165.0%	184.5%
	CES SCA Industry Top	5,806.42	-0.1%	-4.7%	93.8%	177.0%
	CES Greater Bay Area Select	2,802.08	-0.1%	-1.7%	57.2%	n.a.
	CES Foreign A-Shares Choice	3,749.38	0.7%	-4.0%	n.a.	n.a.
<b>Strategy Indices Performance</b>						
	CES High Yield	3,792.23	-1.4%	11.7%	40.0%	30.1%
	CES SCHK HYL V	2,780.64	-1.2%	8.6%	0.2%	1.3%
	CES SCHK Moat	5,169.73	-4.8%	0.4%	101.4%	92.0%
	CES SCHK Value	4,532.31	-2.2%	8.6%	48.4%	52.9%
	CES SCHK Growth	7,476.64	-2.8%	0.9%	127.5%	117.1%