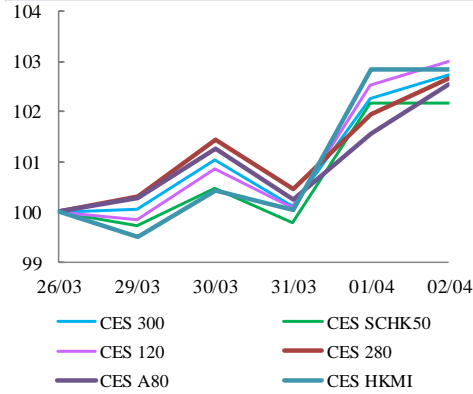


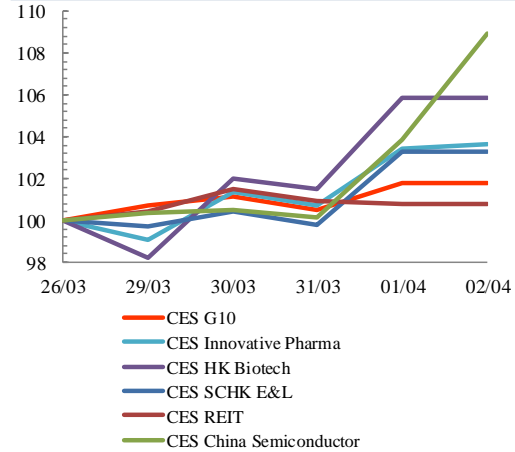


Index Performance Review (26 March 2021 – 2 April 2021)

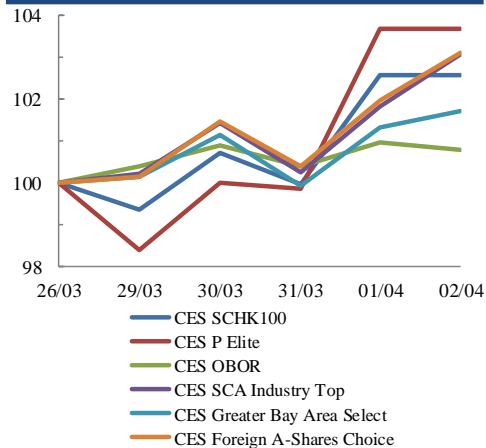
Size Indices Performance
26/3/2021 -2/4/2021



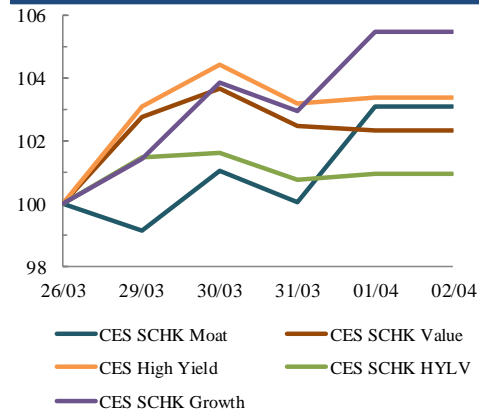
Sector Indices Performance
26/3/2021 -2/4/2021



Thematic Indices Performance
26/3/2021 -2/4/2021



Strategy Indices Performance
26/3/2021 -2/4/2021



	Return (%)	Index	Since 26/03/2021	YTD (2021)	Since SZ-HK Stock (5/12/2016)	Since SH-HK Stock (17/11/2014)
Size Indices Performance						
CES 300		5,851.18	2.7%	3.6%	56.7%	80.9%
CES 120		8,685.03	3.0%	2.7%	67.2%	110.7%
CES 280		8,311.58	2.7%	0.5%	37.0%	61.9%
CES A80		10,034.44	2.5%	-0.2%	62.2%	133.2%
CES HKMI		9,608.51	2.8%	4.6%	71.7%	69.2%
CES SCHK50		3,316.27	2.2%	6.9%	33.5%	28.6%
Sector Indices Performance						
CES G10		5,445.70	1.8%	11.7%	26.9%	-18.3%
CES HK Biotech		12,664.11	5.8%	9.6%	402.4%	n.a.
CES Innovative Pharma		16,630.72	3.6%	3.6%	197.4%	256.9%
CES SCHK E&L		5,701.28	3.3%	13.7%	57.2%	27.8%
CES REIT		2,754.47	0.8%	3.2%	-9.9%	-2.6%
CES China Semiconductor Chips		8,644.71	8.9%	-1.8%	87.9%	142.5%
Thematic Indices Performance						
CES SCHK 100		7,016.23	2.6%	6.1%	60.5%	52.1%
CES OBOR		2,061.69	0.8%	2.5%	23.7%	n.a.
CES P Elite		10,391.98	3.7%	-0.7%	174.7%	194.9%
CES SCA Industry Top		5,985.50	3.1%	-1.8%	99.8%	185.5%
CES Greater Bay Area Select		2,850.22	1.7%	0.0%	59.9%	n.a.
CES Foreign A-Shares Choice		3,865.44	3.1%	-1.0%	n.a.	n.a.
Strategy Indices Performance						
CES High Yield		3,921.03	3.4%	15.5%	44.7%	34.5%
CES SCHK HYL V		2,806.66	0.9%	9.6%	1.1%	2.2%
CES SCHK Moat		5,328.48	3.1%	3.5%	107.6%	97.9%
CES SCHK Value		4,637.49	2.3%	11.1%	51.9%	56.4%
CES SCHK Growth		7,886.51	5.5%	6.4%	140.0%	129.1%