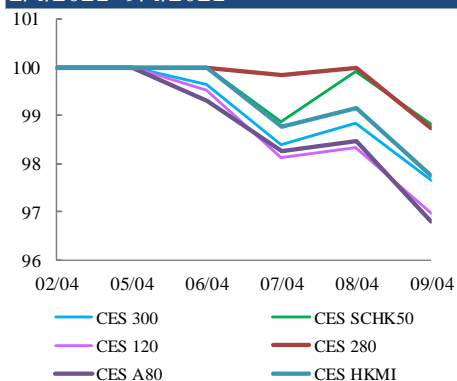
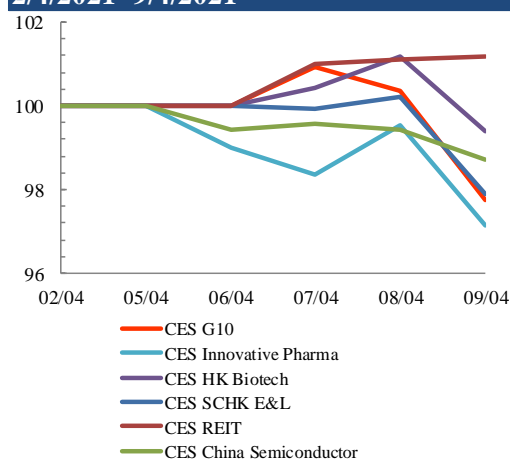


Index Performance Review (2 April 2021 – 9 April 2021)

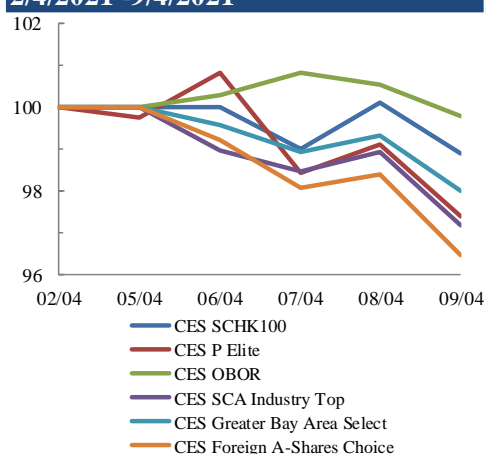
Size Indices Performance 2/4/2021 -9/4/2021



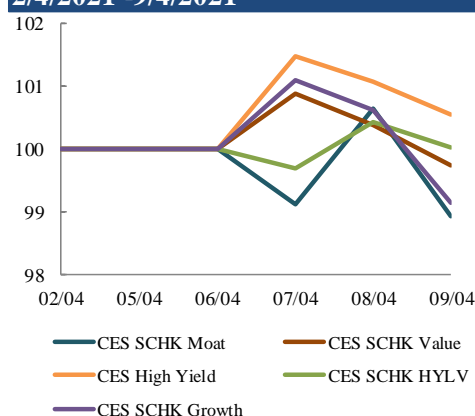
Sector Indices Performance 2/4/2021 -9/4/2021



Thematic Indices Performance 2/4/2021 -9/4/2021



Strategy Indices Performance 2/4/2021 -9/4/2021



Return (%)	Index	Since 02/04/2021	YTD (2021)	Since SZ-HK Stock (5/12/2016)	Since SH-HK Stock (17/11/2014)
Size Indices Performance					
CES 300	5,713.35	-2.4%	1.1%	53.0%	76.7%
CES 120	8,422.83	-3.0%	-0.4%	62.1%	104.3%
CES 280	8,205.72	-1.3%	-0.7%	35.2%	59.9%
CES A80	9,715.09	-3.2%	-3.4%	57.1%	125.8%
CES HKMI	9,393.01	-2.2%	2.3%	67.8%	65.4%
CES SCHK50	3,276.65	-1.2%	5.7%	31.9%	27.1%
Sector Indices Performance					
CES G10	5,322.89	-2.3%	9.2%	24.0%	-20.2%
CES HK Biotech	12,585.86	-0.6%	8.9%	399.3%	n.a.
CES Innovative Pharma	16,157.35	-2.8%	0.6%	188.9%	246.8%
CES SCHK E&L	5,581.97	-2.1%	11.3%	54.0%	25.1%
CES REIT	2,787.09	1.2%	4.4%	-8.8%	-1.5%
CES China Semiconductor Chips	8,533.37	-1.3%	-3.1%	85.5%	139.3%
Thematic Indices Performance					
CES SCHK 100	6,938.84	-1.1%	4.9%	58.8%	50.5%
CES OBOR	2,057.13	-0.2%	2.3%	23.4%	n.a.
CES P Elite	10,121.84	-2.6%	-3.2%	167.6%	187.3%
CES SCA Industry Top	5,816.00	-2.8%	-4.6%	94.1%	177.4%
CES Greater Bay Area Select	2,792.91	-2.0%	-2.0%	56.7%	n.a.
CES Foreign A-Shares Choice	3,729.17	-3.5%	-4.5%	n.a.	n.a.
Strategy Indices Performance					
CES High Yield	3,942.23	0.5%	16.1%	45.5%	35.2%
CES SCHK HYL V	2,807.44	0.0%	9.6%	1.1%	2.2%
CES SCHK Moat	5,271.33	-1.1%	2.4%	105.4%	95.7%
CES SCHK Value	4,625.52	-0.3%	10.8%	51.5%	56.0%
CES SCHK Growth	7,818.29	-0.9%	5.5%	137.9%	127.1%