

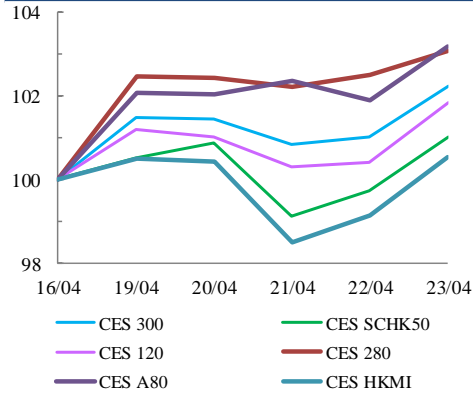


中華交易服務

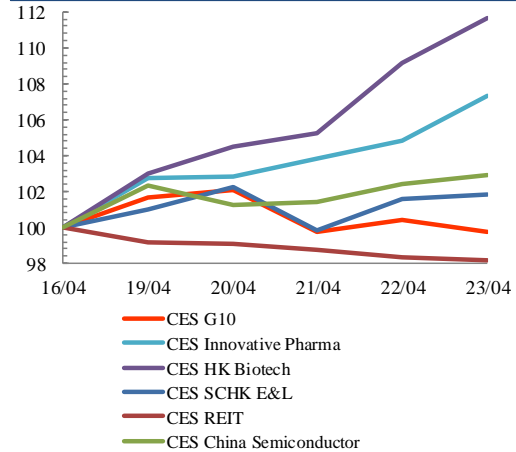
CHINA
EXCHANGES
SERVICES

Index Performance Review (16 April 2021 – 23 April 2021)

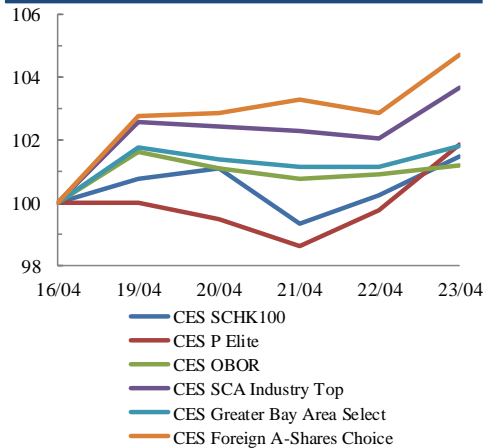
Size Indices Performance
16/4/2021 -23/4/2021



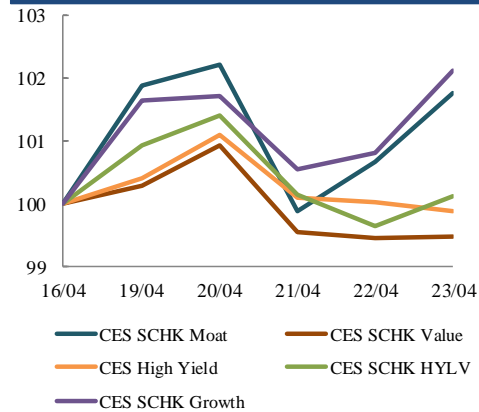
Sector Indices Performance
16/4/2021 -23/4/2021



Thematic Indices Performance
16/4/2021 -23/4/2021



Strategy Indices Performance
16/4/2021 -23/4/2021



Return (%)	Index	Since 16/04/2021	YTD (2021)	Since SZ-HK Stock (5/12/2016)	Since SH-HK Stock (17/11/2014)
Size Indices Performance					
	CES 300	2.2%	2.8%	55.5%	79.5%
	CES 120	1.8%	0.8%	64.1%	106.8%
	CES 280	3.1%	1.7%	38.6%	63.8%
	CES A80	3.2%	-1.8%	59.6%	129.5%
	CES HKMI	0.5%	3.9%	70.5%	68.1%
	CES SCHK50	1.0%	7.1%	33.7%	28.8%
Sector Indices Performance					
	CES G10	-0.3%	5.6%	20.0%	-22.8%
	CES HK Biotech	11.7%	19.8%	449.2%	n.a.
	CES Innovative Pharma	7.3%	6.4%	205.4%	266.5%
	CES SCHK E&L	1.8%	15.7%	59.9%	29.9%
	CES REIT	-1.8%	5.3%	-8.1%	-0.7%
	CES China Semiconductor Chips	2.9%	-2.8%	86.0%	140.0%
Thematic Indices Performance					
	CES SCHK 100	1.5%	6.8%	61.6%	53.2%
	CES OBOR	1.2%	3.0%	24.3%	n.a.
	CES P Elite	1.8%	-1.5%	172.4%	192.5%
	CES SCA Industry Top	3.7%	-2.0%	99.3%	184.8%
	CES Greater Bay Area Select	1.8%	-0.8%	58.7%	n.a.
	CES Foreign A-Shares Choice	4.7%	-1.6%	n.a.	n.a.
Strategy Indices Performance					
	CES High Yield	-0.1%	17.2%	46.9%	36.5%
	CES SCHK HYL V	0.1%	9.9%	1.4%	2.5%
	CES SCHK Moat	1.8%	5.6%	111.8%	101.9%
	CES SCHK Value	-0.5%	11.3%	52.2%	56.7%
	CES SCHK Growth	2.1%	7.9%	143.3%	132.2%