

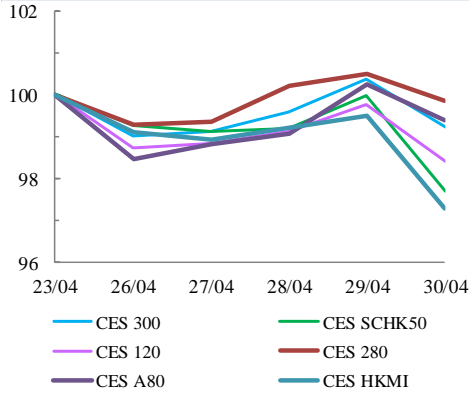


中華交易服務

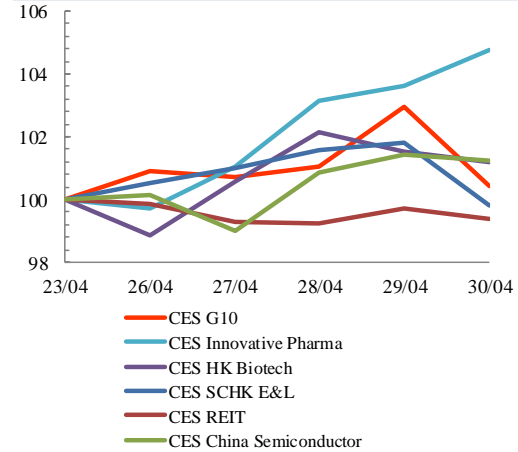
CHINA
EXCHANGES
SERVICES

Index Performance Review (23 April 2021 – 30 April 2021)

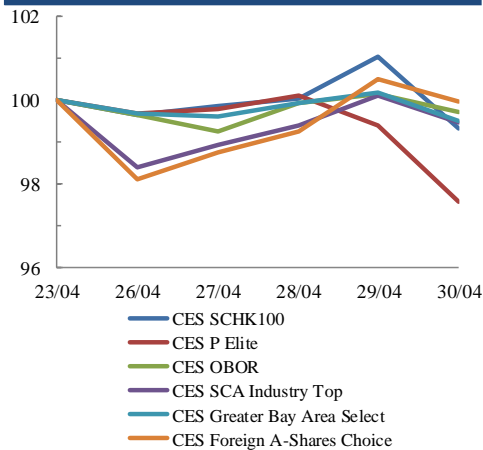
Size Indices Performance
23/4/2021 -30/4/2021



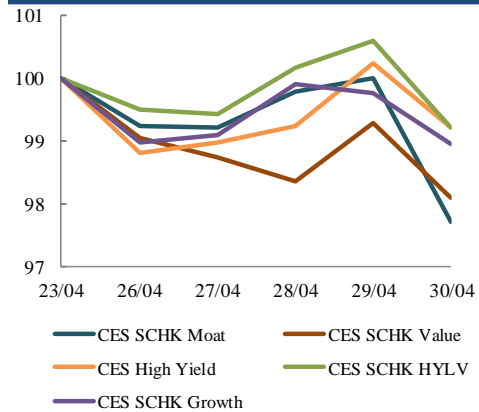
Sector Indices Performance
23/4/2021 -30/4/2021



Thematic Indices Performance
23/4/2021 -30/4/2021



Strategy Indices Performance
23/4/2021 -30/4/2021



Return (%)	Index	Since 23/04/2021	YTD (2021)	Since SZ-HK Stock (5/12/2016)	Since SH-HK Stock (17/11/2014)	
Size Indices Performance						
	CES 300	5,761.45	-0.8%	2.0%	54.3%	78.2%
	CES 120	8,389.34	-1.6%	-0.8%	61.5%	103.5%
	CES 280	8,396.78	-0.2%	1.6%	38.4%	63.6%
	CES A80	9,813.99	-0.6%	-2.4%	58.7%	128.1%
	CES HKMI	9,284.18	-2.7%	1.1%	65.9%	63.5%
	CES SCHK50	3,244.20	-2.3%	4.6%	30.6%	25.8%
Sector Indices Performance						
	CES G10	5,170.73	0.4%	6.1%	20.5%	-22.5%
	CES HK Biotech	14,010.26	1.2%	21.2%	455.8%	n.a.
	CES Innovative Pharma	17,892.83	4.8%	11.4%	220.0%	284.0%
	CES SCHK E&L	5,786.54	-0.2%	15.4%	59.6%	29.7%
	CES REIT	2,791.92	-0.6%	4.6%	-8.7%	-1.3%
	CES China Semiconductor Chips	8,664.25	1.3%	-1.6%	88.3%	143.0%
Thematic Indices Performance						
	CES SCHK 100	7,014.67	-0.7%	6.1%	60.5%	52.1%
	CES OBOR	2,065.53	-0.3%	2.7%	23.9%	n.a.
	CES P Elite	10,053.35	-2.4%	-3.9%	165.8%	185.3%
	CES SCA Industry Top	5,937.20	-0.6%	-2.6%	98.2%	183.2%
	CES Greater Bay Area Select	2,813.06	-0.5%	-1.3%	57.8%	n.a.
	CES Foreign A-Shares Choice	3,841.68	0.0%	-1.6%	n.a.	n.a.
Strategy Indices Performance						
	CES High Yield	3,947.74	-0.8%	16.3%	45.7%	35.4%
	CES SCHK HYL V	2,793.02	-0.8%	9.0%	0.6%	1.7%
	CES SCHK Moat	5,312.16	-2.3%	3.2%	107.0%	97.3%
	CES SCHK Value	4,559.30	-1.9%	9.2%	49.3%	53.8%
	CES SCHK Growth	7,911.41	-1.0%	6.7%	140.7%	129.8%