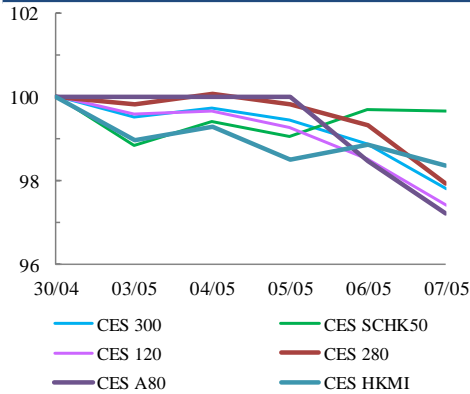


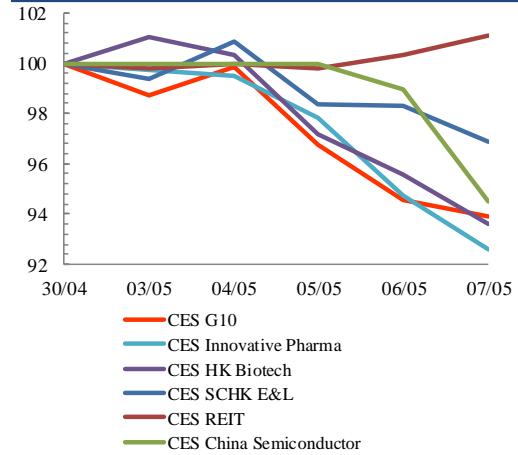


Index Performance Review (30 April 2021 – 7 May 2021)

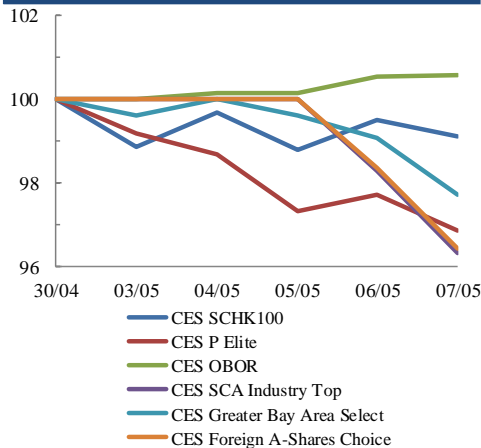
**Size Indices Performance**  
30/4/2021 -7/5/2021



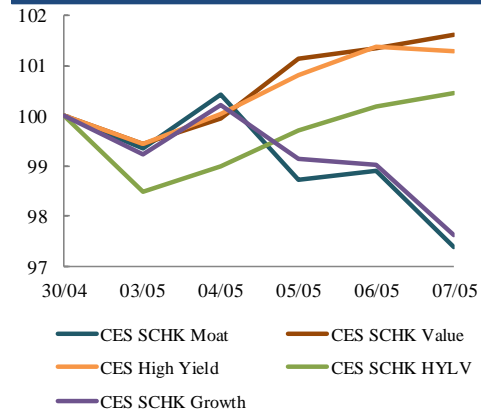
**Sector Indices Performance**  
30/4/2021 -7/5/2021



**Thematic Indices Performance**  
30/4/2021 -7/5/2021



**Strategy Indices Performance**  
30/4/2021 -7/5/2021



Return (%)	Index	Since 30/04/2021	YTD (2021)	Since SZ-HK Stock (5/12/2016)	Since SH-HK Stock (17/11/2014)	
<b>Size Indices Performance</b>						
	CES 300	5,635.13	-2.2%	-0.2%	50.9%	74.3%
	CES 120	8,172.80	-2.6%	-3.4%	57.3%	98.2%
	CES 280	8,223.34	-2.1%	-0.5%	35.5%	60.2%
	CES A80	9,540.31	-2.8%	-5.1%	54.2%	121.7%
	CES HKMI	9,131.75	-1.6%	-0.6%	63.1%	60.8%
	CES SCHK50	3,233.17	-0.3%	4.3%	30.2%	25.4%
<b>Sector Indices Performance</b>						
	CES G10	4,856.80	-6.1%	-0.4%	13.2%	-27.2%
	CES HK Biotech	13,113.84	-6.4%	13.5%	420.2%	n.a.
	CES Innovative Pharma	16,564.64	-7.4%	3.2%	196.2%	255.5%
	CES SCHK E&L	5,604.17	-3.2%	11.8%	54.6%	25.6%
	CES REIT	2,823.00	1.1%	5.8%	-7.7%	-0.2%
	CES China Semiconductor Chips	8,185.35	-5.5%	-7.0%	77.9%	129.6%
<b>Thematic Indices Performance</b>						
	CES SCHK 100	6,950.99	-0.9%	5.1%	59.0%	50.7%
	CES OBOR	2,077.58	0.6%	3.3%	24.6%	n.a.
	CES P Elite	9,737.60	-3.1%	-6.9%	157.4%	176.4%
	CES SCA Industry Top	5,718.44	-3.7%	-6.2%	90.9%	172.8%
	CES Greater Bay Area Select	2,748.87	-2.3%	-3.6%	54.2%	n.a.
	CES Foreign A-Shares Choice	3,703.98	-3.6%	-5.1%	n.a.	n.a.
<b>Strategy Indices Performance</b>						
	CES High Yield	3,997.96	1.3%	17.7%	47.6%	37.2%
	CES SCHK HYL V	2,805.66	0.5%	9.5%	1.1%	2.2%
	CES SCHK Moat	5,172.75	-2.6%	0.5%	101.6%	92.1%
	CES SCHK Value	4,632.71	1.6%	11.0%	51.7%	56.2%
	CES SCHK Growth	7,722.89	-2.4%	4.2%	135.0%	124.3%