

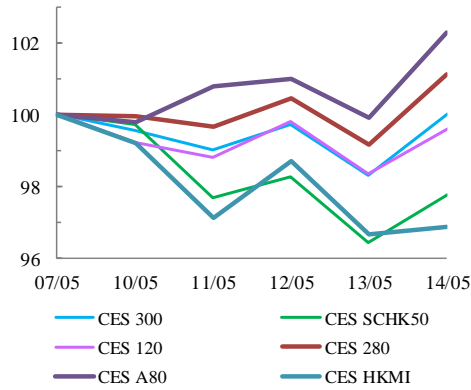


中華交易服務

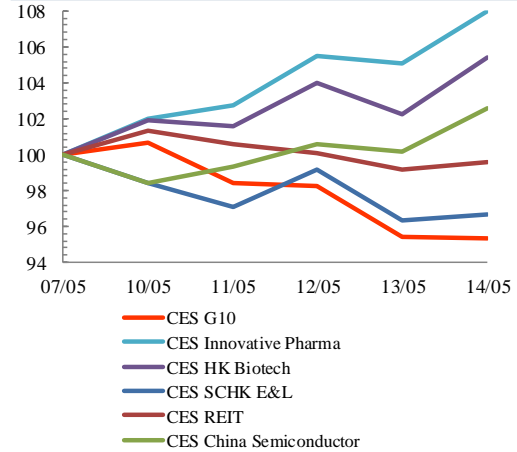
CHINA
EXCHANGES
SERVICES

Index Performance Review (7 May 2021 – 14 May 2021)

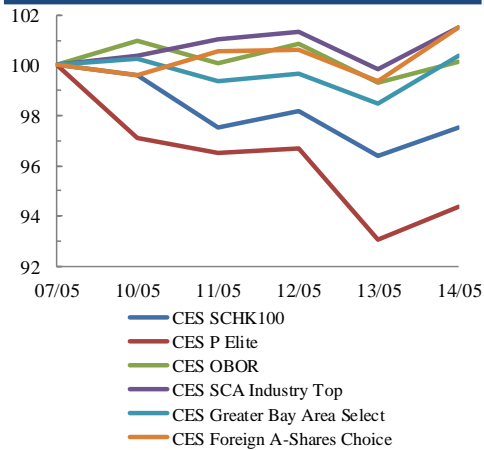
Size Indices Performance
7/5/2021 -14/5/2021



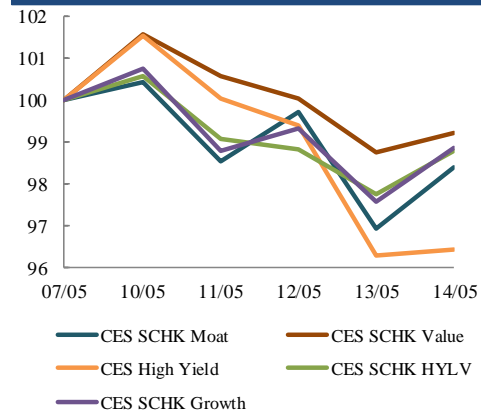
Sector Indices Performance
7/5/2021 -14/5/2021



Thematic Indices Performance
7/5/2021 -14/5/2021



Strategy Indices Performance
7/5/2021 -14/5/2021



Return (%)	Index	Since 07/05/2021	YTD (2021)	Since SZ-HK Stock (5/12/2016)	Since SH-HK Stock (17/11/2014)	
Size Indices Performance						
	CES 300	5,636.01	0.0%	-0.2%	50.9%	74.3%
	CES 120	8,140.54	-0.4%	-3.8%	56.7%	97.4%
	CES 280	8,315.32	1.1%	0.6%	37.0%	62.0%
	CES A80	9,759.47	2.3%	-2.9%	57.8%	126.8%
	CES HKMI	8,845.57	-3.1%	-3.7%	58.0%	55.8%
	CES SCHK50	3,160.89	-2.2%	1.9%	27.2%	22.6%
Sector Indices Performance						
	CES G10	4,630.11	-4.7%	-5.0%	7.9%	-30.6%
	CES HK Biotech	13,820.63	5.4%	19.6%	448.3%	n.a.
	CES Innovative Pharma	17,890.86	8.0%	11.4%	219.9%	284.0%
	CES SCHK E&L	5,418.90	-3.3%	8.1%	49.5%	21.4%
	CES REIT	2,809.95	-0.5%	5.3%	-8.1%	-0.7%
	CES China Semiconductor Chips	8,393.22	2.5%	-4.6%	82.4%	135.4%
Thematic Indices Performance						
	CES SCHK 100	6,780.42	-2.5%	2.5%	55.1%	47.0%
	CES OBOR	2,080.04	0.1%	3.5%	24.8%	n.a.
	CES P Elite	9,188.83	-5.6%	-12.2%	142.9%	160.8%
	CES SCA Industry Top	5,806.09	1.5%	-4.7%	93.8%	177.0%
	CES Greater Bay Area Select	2,759.50	0.4%	-3.2%	54.8%	n.a.
	CES Foreign A-Shares Choice	3,760.01	1.5%	-3.7%	n.a.	n.a.
Strategy Indices Performance						
	CES High Yield	3,855.03	-3.6%	13.5%	42.3%	32.2%
	CES SCHK HYL V	2,771.88	-1.2%	8.2%	-0.1%	1.0%
	CES SCHK Moat	5,089.79	-1.6%	-1.1%	98.3%	89.0%
	CES SCHK Value	4,596.31	-0.8%	10.1%	50.5%	55.0%
	CES SCHK Growth	7,634.78	-1.1%	3.0%	132.3%	121.7%