

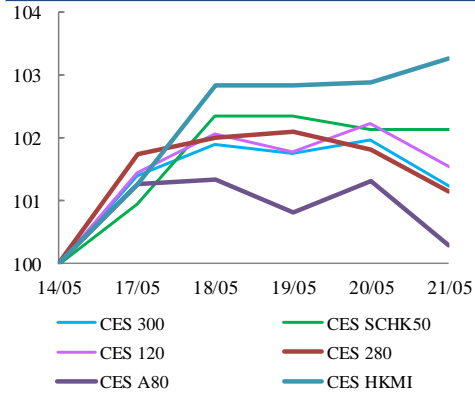


中華交易服務

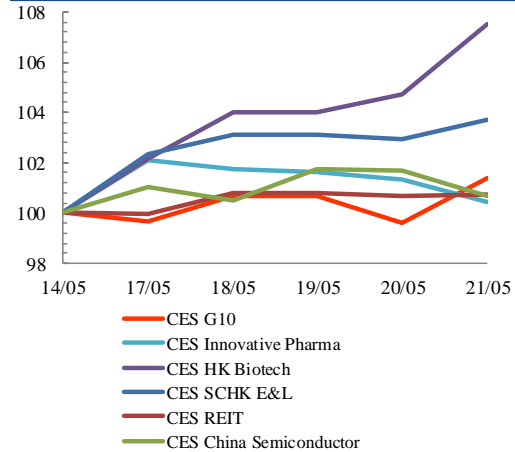
CHINA  
EXCHANGES  
SERVICES

## Index Performance Review (14 May 2021 – 21 May 2021)

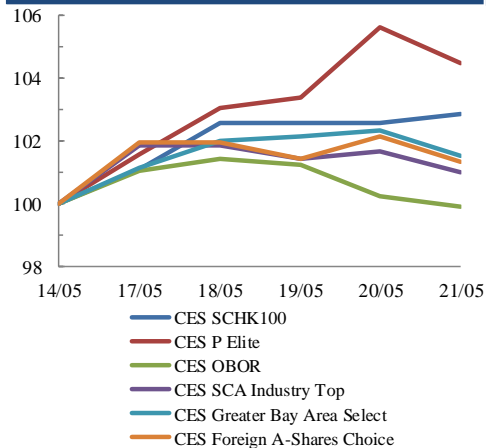
### Size Indices Performance 14/5/2021 -21/5/2021



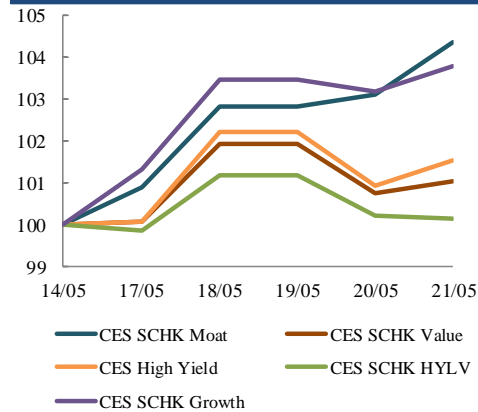
### Sector Indices Performance 14/5/2021 -21/5/2021



### Thematic Indices Performance 14/5/2021 -21/5/2021



### Strategy Indices Performance 14/5/2021 -21/5/2021



Return (%)	Index	Since 14/05/2021	YTD (2021)	Since SZ-HK Stock (5/12/2016)	Since SH-HK Stock (17/11/2014)
<b>Size Indices Performance</b>					
CES 300	5,704.54	1.2%	1.0%	52.8%	76.4%
CES 120	8,266.26	1.5%	-2.3%	59.1%	100.5%
CES 280	8,411.09	1.2%	1.7%	38.6%	63.9%
CES A80	9,788.48	0.3%	-2.6%	58.3%	127.5%
CES HKMI	9,133.21	3.3%	-0.6%	63.2%	60.9%
CES SCHK50	3,228.20	2.1%	4.1%	30.0%	25.2%
<b>Sector Indices Performance</b>					
CES G10	4,694.72	1.4%	-3.7%	9.4%	-29.6%
CES HK Biotech	14,858.86	7.5%	28.6%	489.5%	n.a.
CES Innovative Pharma	17,971.95	0.5%	11.9%	221.4%	285.7%
CES SCHK E&L	5,618.71	3.7%	12.1%	55.0%	25.9%
CES REIT	2,830.35	0.7%	6.1%	-7.4%	0.1%
CES China Semiconductor Chips	8,450.31	0.7%	-4.0%	83.7%	137.0%
<b>Thematic Indices Performance</b>					
CES SCHK 100	6,973.29	2.8%	5.5%	59.6%	51.2%
CES OBOR	2,077.56	-0.1%	3.3%	24.6%	n.a.
CES P Elite	9,600.27	4.5%	-8.2%	153.8%	172.5%
CES SCA Industry Top	5,862.68	1.0%	-3.8%	95.7%	179.7%
CES Greater Bay Area Select	2,801.07	1.5%	-1.8%	57.2%	n.a.
CES Foreign A-Shares Choice	3,810.43	1.3%	-2.4%	n.a.	n.a.
<b>Strategy Indices Performance</b>					
CES High Yield	3,914.75	1.5%	15.3%	44.5%	34.3%
CES SCHK HYL V	2,776.11	0.2%	8.4%	0.0%	1.1%
CES SCHK Moat	5,311.95	4.4%	3.2%	107.0%	97.3%
CES SCHK Value	4,643.93	1.0%	11.2%	52.1%	56.6%
CES SCHK Growth	7,924.66	3.8%	6.9%	141.1%	130.2%