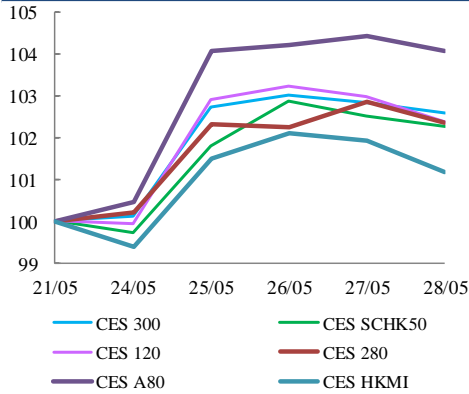


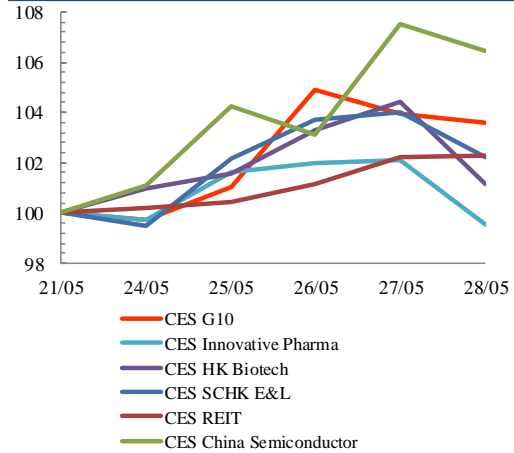


Index Performance Review (21 May 2021 – 28 May 2021)

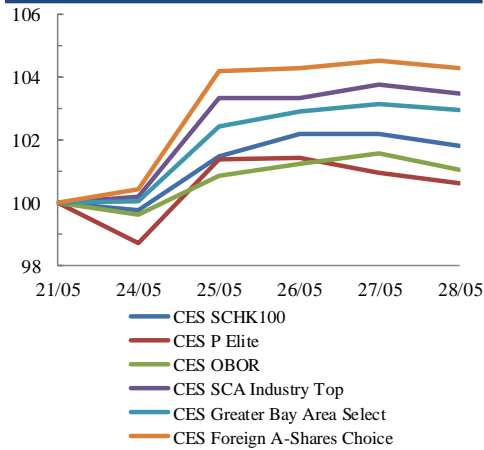
Size Indices Performance
21/5/2021 -28/5/2021



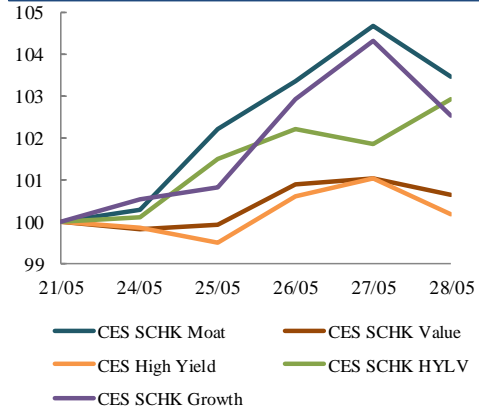
Sector Indices Performance
21/5/2021 -28/5/2021



Thematic Indices Performance
21/5/2021 -28/5/2021



Strategy Indices Performance
21/5/2021 -28/5/2021



Return (%)	Index	Since 21/05/2021	YTD (2021)	Since SZ-HK Stock (5/12/2016)	Since SH-HK Stock (17/11/2014)
Size Indices Performance					
	CES 300	5,851.35	2.6%	3.6%	56.7%
	CES 120	8,463.52	2.4%	0.1%	62.9%
	CES 280	8,609.60	2.4%	4.1%	41.9%
	CES A80	10,187.76	4.1%	1.3%	64.7%
	CES HKMI	9,242.33	1.2%	0.6%	65.1%
	CES SCHK50	3,301.81	2.3%	6.5%	32.9%
Sector Indices Performance					
	CES G10	4,863.62	3.6%	-0.2%	13.3%
	CES HK Biotech	15,030.42	1.2%	30.1%	496.3%
	CES Innovative Pharma	17,888.43	-0.5%	11.4%	219.9%
	CES SCHK E&L	5,742.75	2.2%	14.6%	58.4%
	CES REIT	2,895.77	2.3%	8.5%	-5.3%
	CES China Semiconductor Chips	8,997.20	6.5%	2.2%	95.6%
Thematic Indices Performance					
	CES SCHK 100	7,099.75	1.8%	7.4%	62.4%
	CES OBOR	2,099.02	1.0%	4.4%	25.9%
	CES P Elite	9,658.18	0.6%	-7.7%	155.3%
	CES SCA Industry Top	6,066.11	3.5%	-0.5%	102.5%
	CES Greater Bay Area Select	2,883.34	2.9%	1.1%	61.8%
	CES Foreign A-Shares Choice	3,973.47	4.3%	1.8%	n.a.
Strategy Indices Performance					
	CES High Yield	3,922.02	0.2%	15.5%	44.8%
	CES SCHK HYL V	2,857.13	2.9%	11.5%	2.9%
	CES SCHK Moat	5,496.63	3.5%	6.8%	114.2%
	CES SCHK Value	4,673.62	0.6%	11.9%	53.1%
	CES SCHK Growth	8,126.73	2.5%	9.6%	147.3%