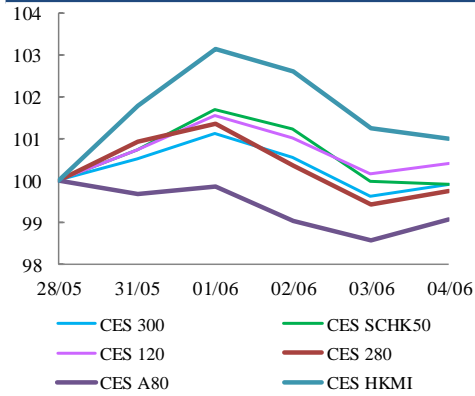


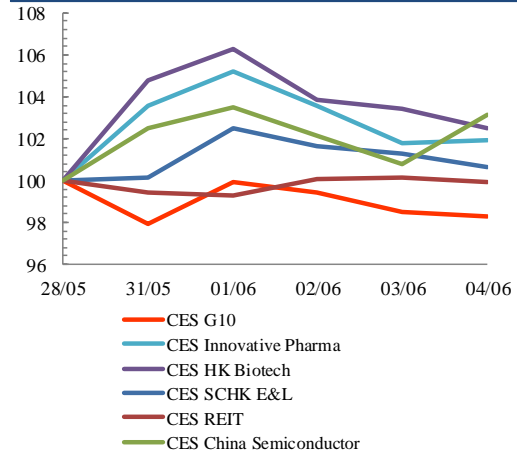


Index Performance Review (28 May 2021 – 4 June 2021)

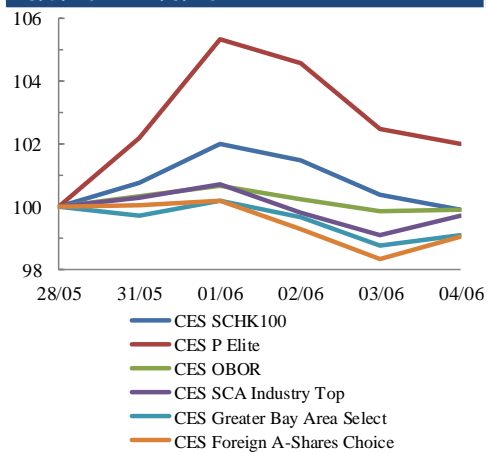
Size Indices Performance
28/5/2021 -4/6/2021



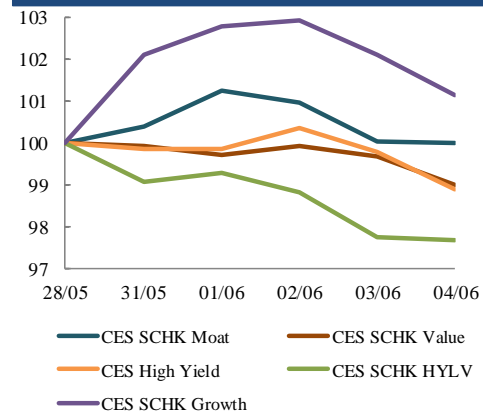
Sector Indices Performance
28/5/2021 -4/6/2021



Thematic Indices Performance
28/5/2021 -4/6/2021



Strategy Indices Performance
28/5/2021 -4/6/2021



Return (%)	Index	Since 28/05/2021	YTD (2021)	Since SZ-HK Stock (5/12/2016)	Since SH-HK Stock (17/11/2014)	
Size Indices Performance						
	CES 300	5,846.80	-0.1%	3.5%	56.6%	80.8%
	CES 120	8,497.55	0.4%	0.5%	63.6%	106.1%
	CES 280	8,586.51	-0.3%	3.9%	41.5%	67.3%
	CES A80	10,091.75	-0.9%	0.4%	63.2%	134.5%
	CES HKMI	9,335.97	1.0%	1.6%	66.8%	64.4%
	CES SCHK50	3,298.61	-0.1%	6.4%	32.8%	28.0%
Sector Indices Performance						
	CES G10	4,781.58	-1.7%	-1.9%	11.4%	-28.3%
	CES HK Biotech	15,405.79	2.5%	33.3%	511.2%	n.a.
	CES Innovative Pharma	18,227.63	1.9%	13.5%	226.0%	291.2%
	CES SCHK E&L	5,779.94	0.6%	15.3%	59.4%	29.5%
	CES REIT	2,893.94	-0.1%	8.4%	-5.3%	2.3%
	CES China Semiconductor Chips	9,278.67	3.1%	5.4%	101.7%	160.2%
Thematic Indices Performance						
	CES SCHK 100	7,093.37	-0.1%	7.3%	62.3%	53.8%
	CES OBOR	2,097.15	-0.1%	4.3%	25.8%	n.a.
	CES P Elite	9,849.31	2.0%	-5.8%	160.4%	179.5%
	CES SCA Industry Top	6,048.18	-0.3%	-0.7%	101.9%	188.5%
	CES Greater Bay Area Select	2,856.62	-0.9%	0.2%	60.3%	n.a.
	CES Foreign A-Shares Choice	3,934.67	-1.0%	0.8%	n.a.	n.a.
Strategy Indices Performance						
	CES High Yield	3,878.02	-1.1%	14.2%	43.1%	33.0%
	CES SCHK HYL V	2,790.55	-2.3%	8.9%	0.5%	1.6%
	CES SCHK Moat	5,495.98	0.0%	6.8%	114.2%	104.1%
	CES SCHK Value	4,627.32	-1.0%	10.8%	51.5%	56.1%
	CES SCHK Growth	8,218.36	1.1%	10.9%	150.1%	138.7%