

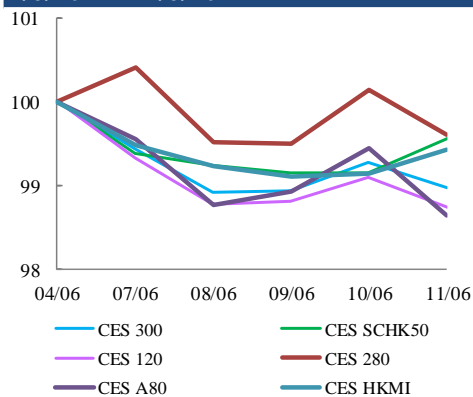


中華交易服務

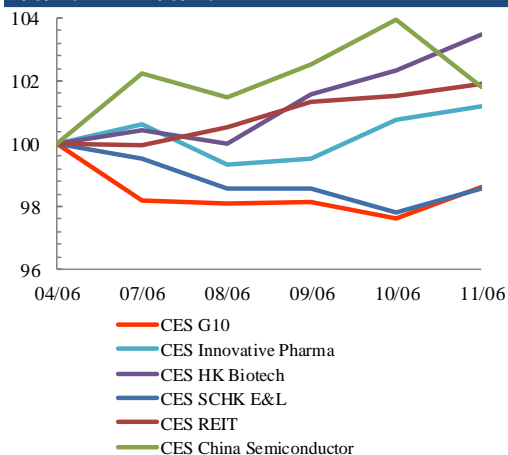
CHINA  
EXCHANGES  
SERVICES

## Index Performance Review (4 June 2021 – 11 June 2021)

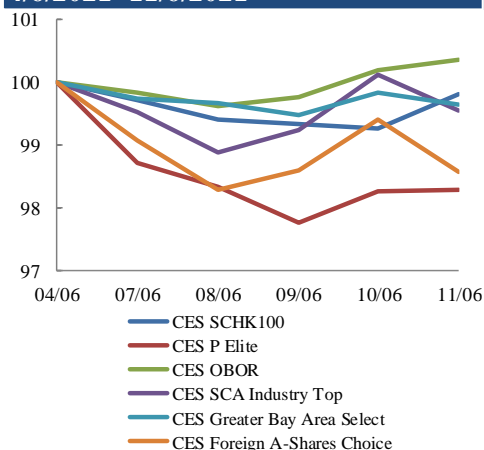
### Size Indices Performance 4/6/2021 -11/6/2021



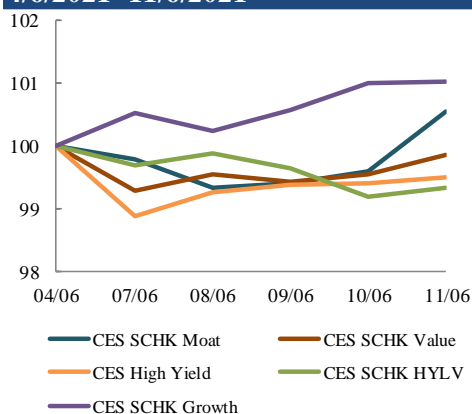
### Sector Indices Performance 4/6/2021 -11/6/2021



### Thematic Indices Performance 4/6/2021 -11/6/2021



### Strategy Indices Performance 4/6/2021 -11/6/2021



Return (%)	Index	Since 04/06/2021	YTD (2021)	Since SZ-HK Stock (5/12/2016)	Since SH-HK Stock (17/11/2014)	
<b>Size Indices Performance</b>						
	CES 300	5,786.89	-1.0%	2.4%	55.0%	78.9%
	CES 120	8,389.92	-1.3%	-0.8%	61.5%	103.5%
	CES 280	8,552.03	-0.4%	3.4%	40.9%	66.6%
	CES A80	9,954.59	-1.4%	-1.0%	60.9%	131.4%
	CES HKMI	9,281.87	-0.6%	1.0%	65.8%	63.5%
	CES SCHK50	3,284.08	-0.4%	5.9%	32.2%	27.4%
<b>Sector Indices Performance</b>						
	CES G10	4,714.46	-1.4%	-3.3%	9.8%	-29.3%
	CES HK Biotech	15,937.32	3.5%	37.9%	532.3%	n.a.
	CES Innovative Pharma	18,440.78	1.2%	14.9%	229.8%	295.8%
	CES SCHK E&L	5,697.68	-1.4%	13.7%	57.1%	27.7%
	CES REIT	2,949.32	1.9%	10.5%	-3.5%	4.3%
	CES China Semiconductor Chips	9,444.61	1.8%	7.3%	105.3%	164.9%
<b>Thematic Indices Performance</b>						
	CES SCHK 100	7,078.91	-0.2%	7.1%	62.0%	53.5%
	CES OBOR	2,104.43	0.3%	4.7%	26.2%	n.a.
	CES P Elite	9,679.93	-1.7%	-7.5%	155.9%	174.7%
	CES SCA Industry Top	6,020.56	-0.5%	-1.2%	101.0%	187.2%
	CES Greater Bay Area Select	2,846.04	-0.4%	-0.2%	59.7%	n.a.
	CES Foreign A-Shares Choice	3,877.99	-1.4%	-0.7%	n.a.	n.a.
<b>Strategy Indices Performance</b>						
	CES High Yield	3,858.53	-0.5%	13.6%	42.4%	32.4%
	CES SCHK HYL V	2,772.11	-0.7%	8.2%	-0.1%	1.0%
	CES SCHK Moat	5,525.96	0.5%	7.4%	115.3%	105.2%
	CES SCHK Value	4,620.87	-0.1%	10.7%	51.3%	55.8%
	CES SCHK Growth	8,302.78	1.0%	12.0%	152.6%	141.1%