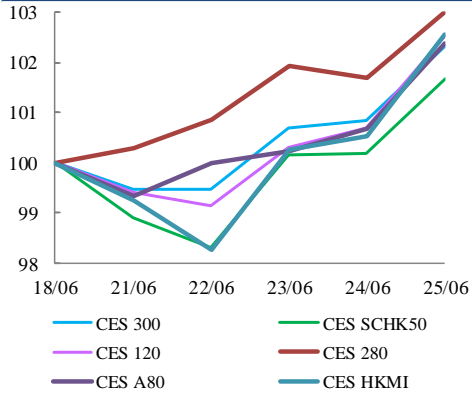
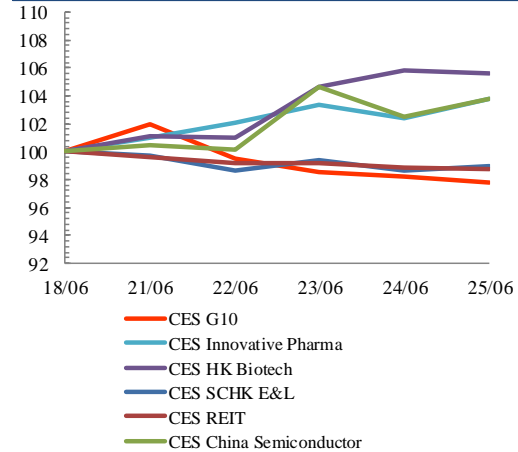


## Index Performance Review (18 June 2021 – 25 June 2021)

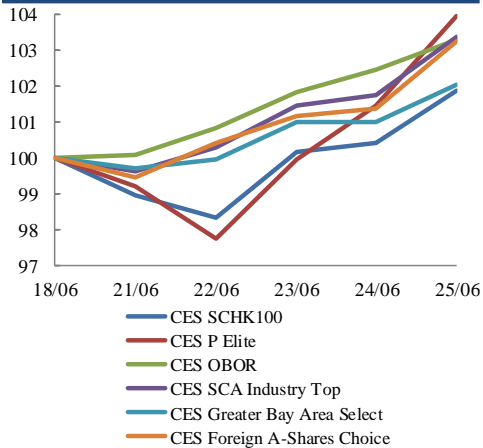
### Size Indices Performance 18/6/2021 -25/6/2021



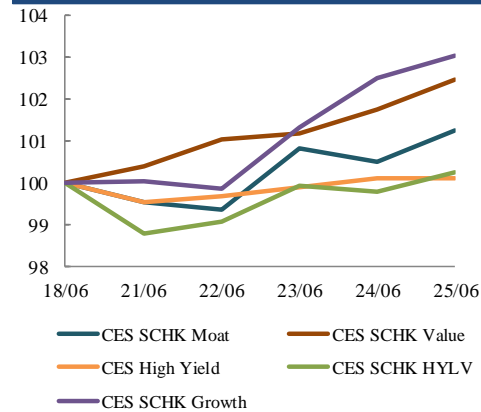
### Sector Indices Performance 18/6/2021 -25/6/2021



### Thematic Indices Performance 18/6/2021 -25/6/2021



### Strategy Indices Performance 18/6/2021 -25/6/2021



	Return (%)	Index	Since 18/06/2021	YTD (2021)	Since SZ-HK Stock (5/12/2016)	Since SH-HK Stock (17/11/2014)
<b>Size Indices Performance</b>						
CES 300		5,849.53	2.3%	3.6%	56.7%	80.9%
CES 120		8,454.62	2.5%	0.0%	62.8%	105.1%
CES 280		8,757.29	3.0%	5.9%	44.3%	70.6%
CES A80		9,853.46	2.4%	-2.0%	59.3%	129.0%
CES HKMI		9,450.25	2.6%	2.9%	68.8%	66.5%
CES SCHK50		3,328.57	1.7%	7.3%	34.0%	29.1%
<b>Sector Indices Performance</b>						
CES G10		4,570.97	-2.2%	-6.2%	6.5%	-31.5%
CES HK Biotech		16,496.45	5.6%	42.8%	554.4%	n.a.
CES Innovative Pharma		18,455.37	3.8%	14.9%	230.0%	296.1%
CES SCHK E&L		5,781.39	-1.0%	15.3%	59.5%	29.6%
CES REIT		2,887.42	-1.3%	8.2%	-5.6%	2.1%
CES China Semiconductor Chips		10,621.32	3.8%	20.7%	130.9%	197.9%
<b>Thematic Indices Performance</b>						
CES SCHK 100		7,170.63	1.8%	8.4%	64.1%	55.5%
CES OBOR		2,123.52	3.3%	5.6%	27.4%	n.a.
CES P Elite		10,037.18	4.0%	-4.0%	165.3%	184.9%
CES SCA Industry Top		6,010.18	3.4%	-1.4%	100.6%	186.7%
CES Greater Bay Area Select		2,877.64	2.1%	0.9%	61.5%	n.a.
CES Foreign A-Shares Choice		3,885.01	3.3%	-0.5%	n.a.	n.a.
<b>Strategy Indices Performance</b>						
CES High Yield		3,683.93	0.1%	8.5%	36.0%	26.4%
CES SCHK HYL V		2,732.19	0.2%	6.7%	-1.6%	-0.5%
CES SCHK Moat		5,614.34	1.2%	9.1%	118.8%	108.5%
CES SCHK Value		4,501.25	2.5%	7.8%	47.4%	51.8%
CES SCHK Growth		8,284.05	3.0%	11.7%	152.1%	140.6%