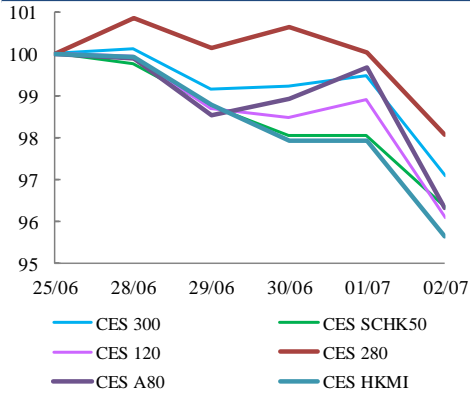
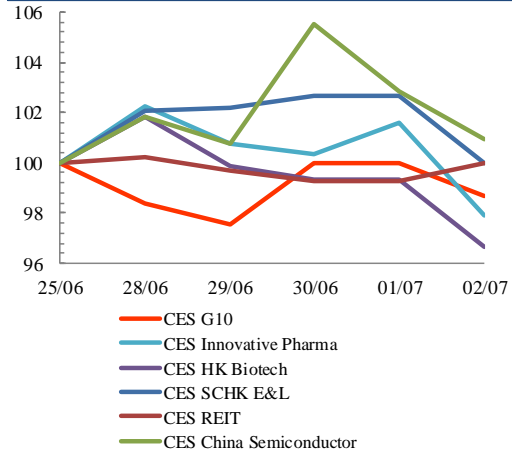


## Index Performance Review (25 June 2021 – 2 July 2021)

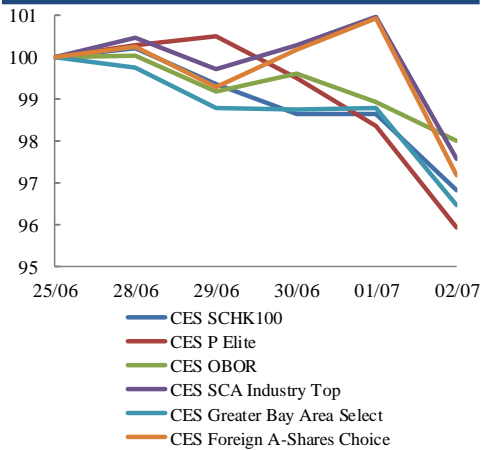
### Size Indices Performance 25/6/2021 -2/7/2021



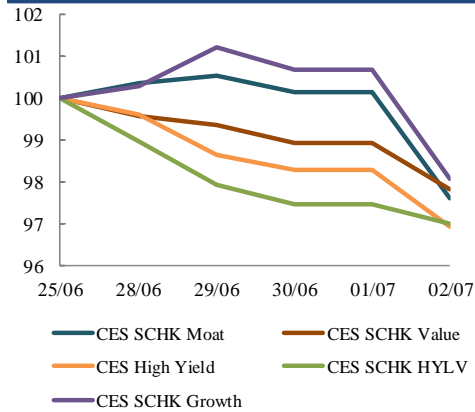
### Sector Indices Performance 25/6/2021 -2/7/2021



### Thematic Indices Performance 25/6/2021 -2/7/2021



### Strategy Indices Performance 25/6/2021 -2/7/2021



Return (%)	Index	Since 25/06/2021	YTD (2021)	Since SZ-HK Stock (5/12/2016)	Since SH-HK Stock (17/11/2014)	
<b>Size Indices Performance</b>						
	CES 300	5,678.35	-2.9%	0.5%	52.1%	75.6%
	CES 120	8,125.24	-3.9%	-3.9%	56.4%	97.1%
	CES 280	8,589.30	-1.9%	3.9%	41.5%	67.3%
	CES A80	9,490.61	-3.7%	-5.6%	53.4%	120.6%
	CES HKMI	9,036.82	-4.4%	-1.6%	61.4%	59.2%
	CES SCHK50	3,206.92	-3.7%	3.4%	29.1%	24.4%
<b>Sector Indices Performance</b>						
	CES G10	4,509.17	-1.4%	-7.5%	5.1%	-32.4%
	CES HK Biotech	15,941.43	-3.4%	37.9%	532.4%	n.a.
	CES Innovative Pharma	18,069.84	-2.1%	12.5%	223.1%	287.8%
	CES SCHK E&L	5,779.84	0.0%	15.3%	59.4%	29.5%
	CES REIT	2,887.46	0.0%	8.2%	-5.6%	2.1%
	CES China Semiconductor Chips	10,722.80	1.0%	21.8%	133.1%	200.7%
<b>Thematic Indices Performance</b>						
	CES SCHK 100	6,941.17	-3.2%	5.0%	58.8%	50.5%
	CES OBOR	2,080.60	-2.0%	3.5%	24.8%	n.a.
	CES P Elite	9,628.33	-4.1%	-8.0%	154.5%	173.3%
	CES SCA Industry Top	5,863.28	-2.4%	-3.8%	95.7%	179.7%
	CES Greater Bay Area Select	2,775.87	-3.5%	-2.6%	55.8%	n.a.
	CES Foreign A-Shares Choice	3,775.42	-2.8%	-3.3%	n.a.	n.a.
<b>Strategy Indices Performance</b>						
	CES High Yield	3,570.92	-3.1%	5.2%	31.8%	22.5%
	CES SCHK HYL V	2,650.27	-3.0%	3.5%	-4.5%	-3.5%
	CES SCHK Moat	5,479.58	-2.4%	6.5%	113.5%	103.5%
	CES SCHK Value	4,403.20	-2.2%	5.5%	44.2%	48.5%
	CES SCHK Growth	8,122.75	-1.9%	9.6%	147.2%	135.9%