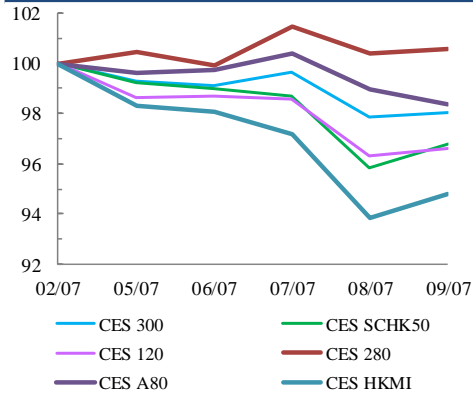
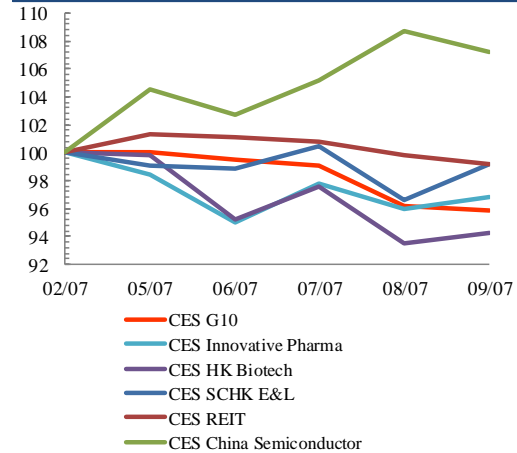


Index Performance Review (2 July 2021 – 9 July 2021)

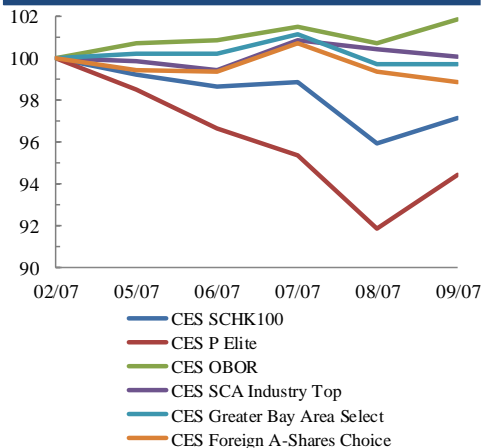
Size Indices Performance 2/7/2021 -9/7/2021



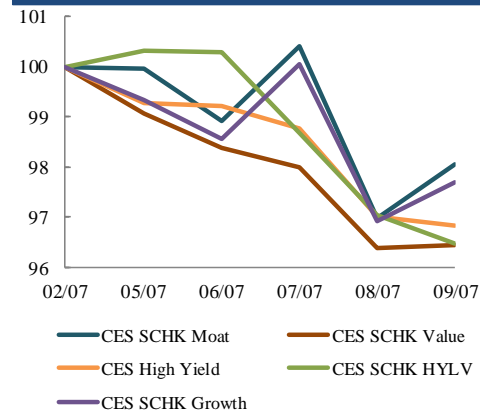
Sector Indices Performance 2/7/2021 -9/7/2021



Thematic Indices Performance 2/7/2021 -9/7/2021



Strategy Indices Performance 2/7/2021 -9/7/2021



Return (%)	Index	Since 02/07/2021	YTD (2021)	Since SZ-HK Stock (5/12/2016)	Since SH-HK Stock (17/11/2014)
Size Indices Performance					
CES 300	5,567.86	-1.9%	-1.4%	49.1%	72.2%
CES 120	7,847.64	-3.4%	-7.2%	51.1%	90.3%
CES 280	8,640.29	0.6%	4.5%	42.4%	68.3%
CES A80	9,336.92	-1.6%	-7.1%	51.0%	117.0%
CES HKMI	8,566.22	-5.2%	-6.7%	53.0%	50.9%
CES SCHK50	3,103.24	-3.2%	0.1%	24.9%	20.4%
Sector Indices Performance					
CES G10	4,322.86	-4.1%	-11.3%	0.7%	-35.2%
CES HK Biotech	15,031.92	-5.7%	30.1%	496.3%	n.a.
CES Innovative Pharma	17,488.20	-3.2%	8.9%	212.7%	275.3%
CES SCHK E&L	5,735.05	-0.8%	14.4%	58.2%	28.5%
CES REIT	2,863.16	-0.8%	7.3%	-6.4%	1.2%
CES China Semiconductor Chips	11,492.52	7.2%	30.6%	149.8%	222.3%
Thematic Indices Performance					
CES SCHK 100	6,741.07	-2.9%	1.9%	54.2%	46.2%
CES OBOR	2,119.15	1.9%	5.4%	27.1%	n.a.
CES P Elite	9,092.77	-5.6%	-13.1%	140.4%	158.1%
CES SCA Industry Top	5,865.62	0.0%	-3.7%	95.8%	179.8%
CES Greater Bay Area Select	2,767.79	-0.3%	-2.9%	55.3%	n.a.
CES Foreign A-Shares Choice	3,732.20	-1.1%	-4.4%	n.a.	n.a.
Strategy Indices Performance					
CES High Yield	3,457.90	-3.2%	1.8%	27.6%	18.6%
CES SCHK HYL	2,556.82	-3.5%	-0.2%	-7.9%	-6.9%
CES SCHK Moat	5,372.89	-1.9%	4.4%	109.4%	99.5%
CES SCHK Value	4,246.41	-3.6%	1.7%	39.1%	43.2%
CES SCHK Growth	7,935.57	-2.3%	7.0%	141.5%	130.5%